

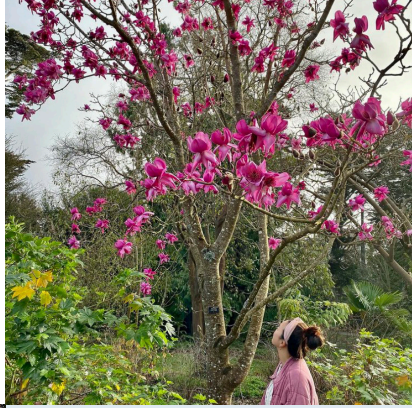
SAN FRANCISCO BOTANICAL GARDEN

2021 ANNUAL REPORT



YEAR IN REVIEW: BY THE NUMBERS

JULY 1, 2020 – JUNE 30, 2021



TOTAL ADMISSIONS REVENUE

\$1,229,039 from fees paid by nonresident visitors – a 25% increase from the prior year



VISITATION

470,112 visits to the Garden, a new record for annual visitation, 72% of which were free of charge



LIBRARY

276 books checked out through Children's Books To Go program

PLANT SALES

7,587 plants sold to the community



YOUTH EDUCATION

6,441 children served through experiential school, summer, and family programs



LIVING COLLECTIONS

12,176 accessions in the Garden's living collection, comprised of **7,774** different kinds of plants, 11% of which are of wild collected origin



MEMBERSHIP

5,469 households— a 22% increase year over year

VOLUNTEERS

365 volunteers who come individually or participate in corporate, school, and service organization projects

11,148 hours contributed by volunteers to virtually every aspect of the Garden's operations



DOCENTS

3,895 visitors engaged

Cover image: Baby Wilson's first visit to the Garden with his dad William. Photo courtesy of mom, Phoebe Ye.

Photos courtesy of Garden visitors via Instagram:

@loveleelizzy
@sarahrophotography
@domenationn
@nick.derenz

Dear Garden Supporters,

Thank you for your investment in San Francisco Botanical Garden over the past year. Your generous commitment has made it possible for us to thrive during a very challenging year. We are emerging out of the pandemic stronger with new members, donors, visitors, and volunteers!

Fiscal year 2021 brought record-breaking visitation to the Garden—the *highest recorded in our history*. Given the economic crisis caused by the pandemic, we wanted to do more to ensure access to the Garden and that no one was turned away for lack of funds. In partnership with the Japanese Tea Garden and Conservatory of Flowers, and with the leadership of Mayor London Breed, we joined the national and local Museums for All programs. This means that low income families can visit all three gardens in Golden Gate Park free of charge. In addition, and to further our partnership with the Japanese Tea Garden and Conservatory of Flowers, Botanical Garden members can now gain free entry to the three Gardens of Golden Gate Park.

We also launched a new popular after-school program that provided children with much needed outdoor activity and social development. In its third year, Garden Camp was proud to be part of the Summer Together initiative which allows 30% of our campers to participate through a scholarship program.

In June 2021, at the American Public Gardens Association annual conference, we were awarded the Dorothy E. Hansell Marketing Award for our **Everybody's Garden** campaign. Featured on bus shelters and digital platforms, this multi-lingual campaign reached new audiences and expressed our values of diversity, equity, and inclusion.

Having received all necessary public approvals and reached our challenge match goal, the long-awaited new plant nursery is now under construction. This new facility will enable us to expand our conservation partnerships and advance our mission to connect people, plants, and the planet.

Despite being an online virtual event for a second year, our annual fundraiser, Garden Feast, was a huge success and we were thrilled to have Abby Meyer of Botanic Gardens Conservation International (BGCI) as our keynote speaker. Through BGCI, we are working to protect and expand our extraordinary Magnolia collection, along with other collections for future generations.

While not the circumstances we hoped or planned for, our new private event rentals program is off to a great start! The Garden was in high demand for micro masked outdoor wedding ceremonies, and we are now booking all kinds of special events.

The return of Flower Piano in September 2021 was especially poignant. After all we have been through collectively, the magic of Flower Piano was truly cathartic.

We are deeply grateful for our community who supported us through this remarkable year.

Stephanie Linder, Executive Director
SAN FRANCISCO BOTANICAL GARDEN

Matthew Stephens, Garden Director
SAN FRANCISCO RECREATION & PARKS

MISSION

San Francisco Botanical Garden connects people to plants, the planet, and each other.

VISION

San Francisco Botanical Garden will be cherished and supported locally and recognized internationally for beauty, diversity of plant collections, educational programs, and inspiring conservation.

VALUES

San Francisco's unique Botanical Garden inspires visitors with the extraordinary diversity of rare and unusual plants that can be grown in coastal California. Through its programs and displays, the Garden cultivates the bond between people and plants and instills a deeper understanding of the necessity to conserve Earth's biological diversity. As a public/private partnership between a community-based nonprofit organization and the San Francisco Recreation & Parks Department, and a beloved San Francisco institution, we are committed to transparency, cultural diversity, inclusion, and environmentally responsible practices. We are proud to be a *public* public garden, accessible to all and grateful to the funders who help sustain us.

SAN FRANCISCO BOTANICAL GARDEN SOCIETY

San Francisco Botanical Garden
at Strybing Arboretum

Golden Gate Park
1199 9th Avenue
San Francisco, CA 94122
415.661.1316
sfbg.org

501(c)(3) non-profit organization,
tax ID 94-6050168

Board of Directors

Delle Maxwell, *Board Chair*
Carol Izumi, *Vice Chair*
Jennifer Petersen, *Treasurer*
Lisa Serwin, *Secretary*
Don Baldocchi, *Past Chair*
Dr. Frank Almeda
Dr. Joseph Ciro Barbaccia
Tish Brown
Jane Chin
Dr. Vanessa Handley
Mary Ellen Hannibal
Susan Hunter
Stephanie Linder
Carla McKay
Lainie Motamedi
Claire Myers
Saul Nadler
Sarah Ryan

Matthew Stephens
Dr. Joanne Whitney
Ruth Wilcox

Staff Leadership

Stephanie Linder, *Executive Director*
Matt Ayotte, *Chief Financial & Operating Officer*
Jessa Barzelay, *Director of Learning & Engagement*
Ryan Guillou, *Curator*
Annette Huddle, *Director of Youth Education*
Brendan V. Lange, *Director of Visitor Experience & Marketing*

SAN FRANCISCO RECREATION & PARKS

Mark Buell, *President, Recreation and Park Commission*
Allan E. Low, *Vice President, Recreation and Park Commission*
Phil Ginsburg, *General Manager*
Dennis Kern, *Director, Operations*
Eric Andersen, *Superintendent, Parks & Open Space*
Matthew Stephens, *Garden Director*



Annual Report Production

Brendan V. Lange,
Editor & Project Manager
Sarah Katsikas, *Designer*

*This publication is printed on
recycled paper with soy ink.*

NEW BOARD LEADERSHIP

DR. VANESSA HANDLEY

The Garden's Board of Directors welcomed new board member Dr. Vanessa Handley, a conservation biologist with active field and research projects around the globe.

Dr. Handley's overarching objective is to advance regional conservation efforts via collaborative, community-based approaches, deploying tools that range from practical horticulture to next generation sequencing.

In addition to her role as Director of Conservation Science at The Red List Project (a plant conservation nonprofit), Vanessa is Coordinator of the Global Conservation Consortium for Cycads at Montgomery Botanical Center and a Research Associate at California Academy of Sciences and UC Berkeley.

Vanessa holds a Ph.D. in Plant Biology from Berkeley and previously served as Director of Collections & Research at the University of California Botanic Garden and Associate Professor of Biology at Holy Names University. Vanessa's conservation activities extend to voluntary service as a Specialist within the IUCN Species Survival Commission, participation in various scientific advisory boards and conservation consortia, and mentorship of underrepresented and non-traditional students in the conservation field.

Welcome, Vanessa!



FAREWELL, MATTHEW!

During his more than five years of service to the gardens of Golden Gate Park, Matthew Stephens, Garden Director at San Francisco Recreation & Parks, made a tremendous contribution to these cherished institutions. At the Botanical Garden, he led the efforts to create the new Celebration Garden and new plant nursery, now under construction. During his tenure, horticultural maintenance improved significantly and many critical projects were undertaken such as: the damaged old perimeter chain-link fence was replaced with attractive and secure fencing, the irrigation systems were upgraded, and three stream sustainable waste management was implemented. Those of us who had the pleasure of working with Matthew will always remember his passion for "crisp edges" along planting beds and paths. As the director of the Conservatory of Flowers, he addressed numerous infrastructure issues in this iconic historic structure, increased visitation, and launched very popular private and public events such as the winter "Night Bloom." More recently, he took the helm at the Japanese Tea Garden, where a beautiful renovation of the Pagoda is nearing completion. While we are sad to see Matthew leave the gardens of Golden Gate Park, we congratulate him on his well-deserved new role as the President & CEO of Mount Auburn Cemetery in Cambridge, MA.

YOUTH EDUCATION

When the Garden reopened to the public on June 1, 2020, the Children's Garden had become a lush but almost impenetrable acre of greenery. Staff immediately set to work to renovate the space, recognizing it as a critical resource for San Francisco children and families. In July we launched a reimagined version of the Bean Sprouts Family Days program, sponsored by Kaiser Permanente, following San Francisco health and safety guidelines for the pandemic. Expanding to four days a week over the course of the year, the free Bean Sprouts program offered opportunities for children to stay active in a safe outdoor environment with their families. Parents appreciated the freedom children experienced to explore and engage with the natural world, describing the Children's Garden as a "Yes Space" that children desperately needed. They also appreciated the sensory and interactive nature of the program, the large variety of activities to enjoy, and the feeling of safety and community during the pandemic.

"Even before Covid there were so few spaces dedicated to the needs and interests of children (free spaces, public spaces), and now there are even fewer. It was tremendously meaningful to both of us that you are cultivating a space for children and their families right now."

—Bean Sprout Family Days Program Participant

launched the Children's Books-to-Go program to help keep the library's circulating children's collection moving and young readers exploring. Children's book circulation increased by 86% over the previous year.

Garden Camp resumed in 2020 as well, serving 91 children with all-day, all-outdoors education between June and August 2020. The return to school, which for most meant the return to all-day, all-indoor screen time, presented the Learning and Engagement Team with a new challenge: launch our first ever after school program. From August 2020 through May 2021, the After-School Program served 197 total students. Many students attended for

GARDEN CAMP BRINGING WONDER TO YOUNG MINDS

"Being in Garden Camp was a big difference from the unstructured child care camps they had been doing over the past year. The difference was in the things they brought back in their minds. Sometimes it would take a second to figure out where they learned it when all of a sudden we'd hear about 'decomposers.' Oh yeah, that's from Garden Camp! Our youngest came home one day bursting with excitement about the wood he was putting together to make a planter. He is not usually building things, so we knew this was a good thing for him. The camp was making him discover new things not only about the world around him, but about himself too."

—Nirav and Bina, parents of Garden Camp participants Ronik and Kalyan



This creative adaptation of the original Bean Sprouts program engaged 6,102 Children's Garden visitors, nearly double the participation of the previous year. Overall, we saw deep appreciation on the part of caregivers, tremendous joy and healthy engagement from the children, and a sense of purpose and hope among the volunteers and staff involved with the program. In addition to the physical health benefits of being active outdoors, adults—volunteers and caregivers alike—regularly reported a sense of improved mental health due to their time spent in the Children's Garden. Numerous San Francisco families were introduced to an outdoor resource available to them even during a time of crisis, and the Children's Garden is now seeing significantly increased visitation throughout the week. Bean Sprouts wasn't the only way we met the needs of local families during the pandemic. The Helen Crocker Russell Library

multiple sessions filling a total of 329 program spots. Participants were frequently overheard referring to the program as "school" and parents expressed relief to have a reliable, safe, and enriching program during a school year that was challenging for kids and families, alike.

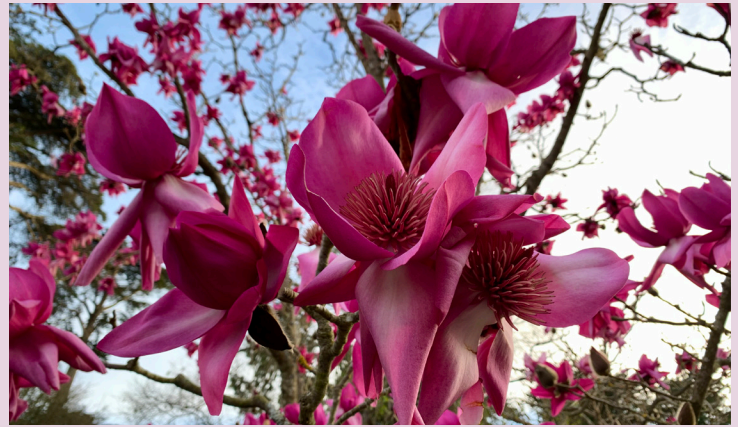
The pandemic also brought about new and expanded partnerships with the Mexican Museum and SF Children and Nature Collaborative. In partnership with the latter, the Youth Education team along with enthusiastic program participants, helped prepare "garden kits" which were distributed to over 10,700 students in the San Francisco Bay Area.

GARDEN COLLECTIONS

MAGNOLIA GRAFTING PROJECT

Magnolias are the Garden's signature collection represented by over two hundred specimens comprised of over fifty species and an additional and almost fifty different cultivars and hybrids. This exceptional diversity places our collection as one of the most diverse ex-situ Magnolia collections globally and positions the Garden as a contributor to broader conservation efforts.

The work is never ending to engage researchers and other gardens to acquire new taxa furthering the collections development, along with the important responsibility to maintain and perpetuate our current collection. This is a challenging task while awaiting the opening of the new nursery, so the collections team at the Garden got creative.



Magnolia campbellii 'Darjeeling'

Preserving documented wild genetics is a key part of conservation, so collecting seed from our Magnolias is not an option due to the high probability of hybridization or inbreeding. Propagating clonally is the best method, but many of these rare species are challenging to grow and there is often little to no research on how to propagate successfully. Grafting has been a successful method for propagating Magnolias for hundreds of years, but as both an artform and a science, careful consideration and trialing of rootstock combinations, techniques, and seasonality need to be executed in perfect combination for success.



This past year the Garden was awarded funding from Botanic Gardens Conservation International's Global Botanic Garden Fund to pursue a Magnolia grafting project. This project was envisioned to send cuttings of just the Garden's rare and wild collected species to expert grafter, Leanne Kenealy with the JC Raulston Arboretum to trial grafting methods, and then share successful plants and their propagation information with other interested botanical gardens across the country. However, through additional private funds from Garden supporters, this project was expanded to include taxa from the Atlanta Botanical Garden, UC Botanical Garden, and the JC Raulston Arboretum to create a piloted propagation consortium. This project created new partnerships allowing for 27 wild collected accessions comprised of 21 taxa to be trialed, many of which having no known record of clonal propagation success.



Now a year later, some amazing successes and learnings were made because of this project. Nine taxa were successfully propagated with some surprising root stock combinations, and 34 plants will be shared between the partner gardens and other interested institutions. New taxa coming to the Garden's collection include *M. kwangsiensis*, *M. changhungtana*, *M. pacifica*, and *M. obovalifolia*, along with beloved *Magnolia* 'Darjeeling' collected in Sikkim, India. With the additional funds and the knowledge gained this past year, we are hoping to pursue this project again to trial unsuccessful species and include other gardens with significant Magnolia collections.

MAGNOLIA QR CODE PROJECT

Each year thousands of visitors flock to the Garden to see our Magnolia collection in bloom. Before the pandemic, this time of the year was a flurry of activity to engage our visitors with the collection through highlighted maps, and docent and staff led tours. Since gathering people in groups was not a possibility, the Garden needed to pivot and find a way to share the unique stories about these species with the public.



Photo courtesy of @cvalisme via Instagram

Activated by a gift from Garden supporter, Norman Goldfarb, the Garden was able to pilot a Magnolia tour with QR codes. A map featuring 25 Magnolias gave visitors the opportunity to find the bright pink signs placed at the base of each specimen and use their phones to access the QR code linked to the Garden Explorer page on our website. Profiles for each of the species allowed for visitors to learn about their horticultural, taxonomic, and conservation status, and images of the plants gave the opportunity to see the flowers if not in bloom.

While visitors learned about the plants, we learned about how they used this new offering. Information such as which plants were visited most, or if they were in flower at the time provides us with useful data to develop similar experiences more effectively in the future. In total, more than 2,000 users accessed the QR codes, and we discovered that *Magnolia* 'Royal Crown' was the most visited as it was in flower for the entire duration of Magnolia season.

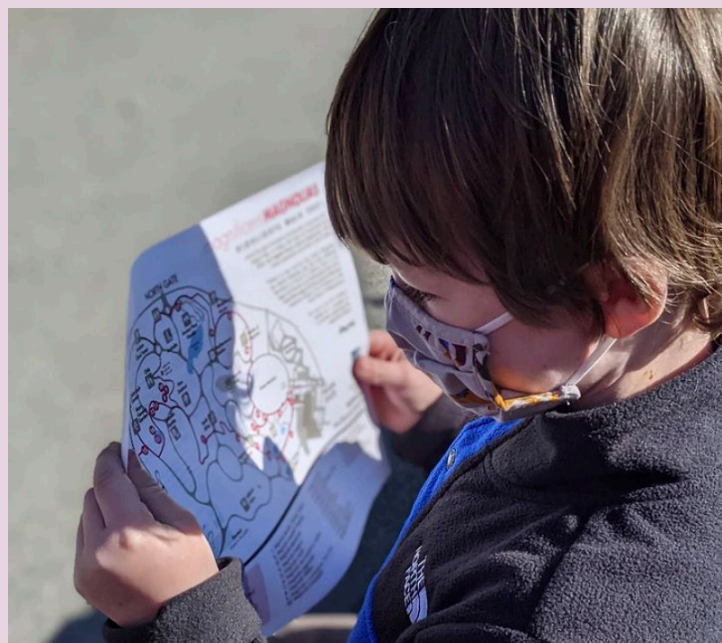


Photo courtesy of @dkpsf via Instagram



California Native Plant meadow. Photo courtesy of Saxon Holt.

CALIFORNIA NATIVE PLANT MEADOW

Through the hard work of staff and volunteers the meadow in the Arthur L. Menzies Garden of California Native Plants is making a comeback. Over the past year nearly 2,000 plants were planted in the meadow, starting the first phase of establishing a California coastal prairie collection. This unique and beautiful plant community is found along the coast ranging from Central to Northern California and is dominated by long-lived bunch grasses and annual wildflowers. Many of the species planted are locally sourced Bay Area ecotypes, helping provide an added layer of significance to this collection.

"It was great! I had an absolutely amazing experience. Because I'd been playing on the open pianos for the past five years, it made performing even sweeter. I was utterly surprised by the amount of people that showed up! I have never seen the Garden that busy. Overall it was just so fun." —Oscar Cervarich, performer



After five successful years, and a pause in 2020 due to the pandemic, we were excited to bring back Flower Piano to transform San Francisco Botanical Garden once again into the city's own alfresco concert hall where everyone is invited to play and listen. "We've really missed our collaboration with the Botanical Garden, bringing to the community our unique interactive music festival, Flower Piano. After everything we've all been through, we were so excited to bring back a safe and joyous musical experience in the Garden for all to enjoy this September" says Dean Mermell, co-founder, together with Mauro ffortissimo, of event partner Sunset Piano.

In 2021, Flower Piano was especially healing and restorative after an unprecedented year of the pandemic, social isolation, political and racial violence, and catastrophic wildfires. Flower Piano is a musical event and attraction that provides open access to music and pianos within the natural, outdoor environment of San Francisco Botanical Garden. Free for San Franciscans, for families receiving SNAP or CalFresh benefits, and for everyone else following \$3–12 general admission, Flower Piano is truly accessible and encouraged for all. More than 60,000 visitors attended Flower Piano this year over the 5-day event, a slight increase from the 2019 12-day, 3-night program—75% attended



"After the long solitary months of the pandemic, my eleven-year old pianist was overjoyed to attend Flower Piano. Meeting so many other musicians and playing for others in the exquisite beauty of the gardens was nourishing, inspiring, and confidence-building for him." —Cindy Wheeler



this year for free. "We were thrilled to have music back in the Garden," says Stephanie Linder, Executive Director. "Flower Piano brings the Botanical Garden to life like nothing else we've ever seen."

Participants are invited to explore the Garden's global living plant collections as they seek out the pianos. At each of the pianos, there were scheduled professional performances, open play time for participants, and community partner performances - reflecting a range of genres, ages, and cultures. The experience brings joy, hope, awe, and a deep sense of community. The most common word used to describe Flower Piano is "magical." "Flower Piano is beloved in San Francisco. It returned at a perfect time, allowing our community to heal together through the combination of music and nature," says Phil Ginsburg, General Manager, San Francisco Recreation & Park Department.

THANK YOU TO OUR COMMUNITY PARTNERS

SFJAZZ

SF Symphony

SF Conservatory of Music

Community Music Center's
Marco Diaz &
Eduardo Corzo

Harlem of the West authors,
Elizabeth Pepin Silva and
Lewis Watts + Sam Peoples Jr.,
Bayview Opera House,
and African American
Historical and Cultural
Society

Ensemble SF

Rabbit Hole Theater

Messy Art Lab

Noe's Garden

Little Mission Studio

Elizabeth Dorman

Martin Luther McCoy,
member of the
SFJAZZ Collective

VOLUNTEERS

GREEN TEAM

Previously, the Green Team was a group of volunteers who rotated among horticulturists to support regular maintenance of the Garden, including weeding, mulching, moving soil, planting, pruning, and more. In response to the pandemic, we created 12 different Green Teams, each of which would support a different horticulturist or part of the Garden. Though small, these volunteer teams, in addition to several volunteer Gardener's Assistants, have provided consistent, dedicated assistance over the past year, with 166 individuals contributing 7,189 hours of service in FY21.



BOOKSTORE & PLANT ARBOR

As many Garden patrons know, the Bookstore and Plant Arbor returned to their schedule of being open daily in spring of 2021. This shift would not be possible without the volunteers who signed up to support these important locations. We welcomed returning volunteers as well as new faces, all of whom were excited to be part of this vibrant and friendly scene.

BEAN SPROUTS FAMILY DAYS

As families and kids returned to the Children's Garden, seeking a safe place to play and be in nature, so did our need for volunteers! It was with great enthusiasm that more than 40 volunteers made their way to the Children's Garden, seeking a connection both with the Garden and with the community, contributing nearly 1,000 hours. Volunteers who had been involved with the school field trip program now welcomed families and small groups to Bean Sprouts Family Days, encouraging them to touch, smell, dig, water, and otherwise explore this 'Yes!' space for kids.



EVENT HOSTS

Another new volunteer role which emerged during the pandemic is that of Event Host. Here, volunteers greet visitors who are attending special events at the Garden, including many micro-weddings held last fall. The joy of this role is meeting folks who are celebrating their special day and guiding them through the beauty of the Garden.

Volunteers and staff were thrilled to return to the Garden in June 2020, after the Garden's 11-week closure due to the pandemic. We adapted existing programs to meet safety requirements, and discovered new ways for volunteers to engage with the Garden.

DOCENTS

Volunteer docents also stepped up to the challenge of engaging with visitors while following pandemic safety guidelines. Instead of leading group tours, docents became Rovers, spending up to two hours per day moving throughout the Garden or standing at key locations, available to answer questions as well as to educate visitors of some of the more extraordinary plants in the collections. In May 2021, docents began leading public and private tours. Currently tours are offered Mondays & Wednesdays at 1:30pm, and Fridays & Saturdays at 10:30am & 1:30pm.



DOCENT TRAINING

Docents play an essential role in greeting and guiding visitors throughout the Garden, introducing them to beautiful and unique plants found in our collections. Due to the pandemic, the 2020 docent training was held entirely online, with virtual lectures and tours. For spring 2021, we were pleased to host a hybrid training; although the majority of content was presented online, we were also able to invite participants into the Garden for several on-site tours and opportunities to explore the Garden's collections.

Congratulations to the fifteen participants who completed this training, held biweekly on Thursday mornings, from March through June. The next docent training is expected to be held in March 2022. Sign up for the Garden's e-newsletter to learn more about this opportunity.

Visitors can learn more about tours at sfbg.org/tours, where they can sign up for a public tour, or arrange a private tour for a group of friends or their organization.

INTERESTED IN VOLUNTEERING?

Volunteer programs will continue to grow and evolve with the Garden. If you are interested in volunteering, please visit sfbg.org/volunteer to learn more and to complete our online application, or contact volunteer@sfbg.org.

THE BOOKSTORE

The Garden Bookstore reopened in October 2020, after the retirement of long-time bookstore manager Dennis Gutmann and almost eight full months of being closed.

The new bookstore manager, Whitney Ochoa, was hired to focus on reopening safely and expanding the tiny store. Here are some of the upgrades that took place:

- The register area was moved outdoors so the store has an inviting, open-air feel
- We welcomed back volunteers to support day-to-day operations
- A new awning was installed
- The store's reopening began with weekends and then steadily moved back into seven days
- The book selection expanded to include more diverse authors and new items made by local artists
- A new bookstore assistant, Amalia Laventure, was hired
- The online store was launched: store.sfbg.org
- Each month since reopening has had stellar sales



...AND PLANT ARBOR

The Plant Arbor reopened in June 2020 with a bang as San Franciscans' became re-focused on greening their homes and gardens. With long-time Nursery Assistant, Diane Glaub, at the lead, the store was able to safely conduct daily sales, as well as small, monthly-themed sales. Many nursery volunteers have come back to support and care for the Arbor, while the nursery remains under construction. The community that supports the Arbor has become known for their plant expertise and practical gardening savvy.



GARDEN PEOPLE

VIRTUAL PROGRAMMING

While the pandemic kept us from gathering in person, virtual programs turned out record-breaking numbers of participants. Virtual programs, and their recordings, allowed hundreds more people to explore, learn, and connect with the Garden. From discovering wildflowers from California to Sydney, being inspired by drought-tolerant gardens and pollinator-friendly plantings, to hands-on crafting workshops with garden-to-you plants, we engaged more than 1,000 people through live virtual programs and over 2,000 through post-program viewings on the SFBG At Home page on our website.



"I love that my personal and professional passion for plants came together through the Garden's virtual programs. Creating my own wreath with a diversity of plants from the collections in the virtual Wreath-Making Workshop and presenting a virtual program on Sydney's wildflowers strengthened my—and I'm sure many others'—connection to plants and the Garden during the pandemic."

—Nathalie Nagalingum, Curator & McAllister Chair of Botany
at California Academy of Sciences

BOB FIORELLO

We honor longtime staff member Bob Fiorello, who retired at the end of June, 2021. In 1998, Bob began working as a horticulturist with San Francisco Recreation & Parks throughout the Garden, focusing on Chile, the Andean Cloud Forest, Zellerbach, and New Zealand. In 2015, he became Chief Horticulturist guiding the Garden into a new era of leadership.



From managing irrigation and materials, to helping set up pianos, to cutting bamboo for the Children's Garden, Bob has been instrumental in attending to the details that help make the Garden run.

Bob deeply cared about working with volunteers and educating the public about horticulture, integrated pest management (IPM), and other topics. You may have worked with Bob during a Community Volunteer Day, or attended his training on "Weeds in the Garden." Bob is a natural teacher, and loves opportunities for hands-on learning.



Bob has been a champion of the Garden for more than 20 years. We want to extend a deep thank you to Bob for all his hard work. We wish Bob the best in retirement!

SAN FRANCISCO BOTANICAL GARDEN SOCIETY FINANCIAL REPORT

STATEMENT OF FINANCIAL POSITION

As of June 30, 2020 and June 30, 2021

ASSETS	2021	2020
Cash and Investments	\$ 10,067,505	\$ 3,922,926
Accounts and Pledges Receivable	15,249,024	370,293
Property and Equipment	1,975,665	786,153
Other	138,871	82,262
Total Assets	\$ 27,431,065	\$ 5,161,634

LIABILITIES AND NET ASSETS	2021	2020
Current Liabilities	\$ 1,129,669	\$ 480,001
Noncurrent Liabilities	392,349	462,500
Net Assets	25,909,047	4,219,133
Total Liabilities and Net Assets	\$ 27,431,065	\$ 5,161,634

STATEMENT OF ACTIVITIES

As of June 30, 2020 and June 30, 2021

SUPPORT AND REVENUE	2021	2020
Contributed Income	\$ 22,832,984	\$ 2,752,662
Investment Income	82,648	(4,576)
Earned Income	858,594	649,323
Admissions Income*	998,718	691,388
Other	481,444	130,417
Total Support and Revenue	\$ 25,254,388	\$ 4,219,214

EXPENSES	2021	2020
Program Services	\$ 2,739,829	\$ 4,076,515
Fundraising and Development	436,204	585,673
Management and General	388,441	411,145
Total Expenses	\$ 3,564,474	\$ 5,073,333

Change in Net Assets **\$ 21,689,914** **\$ (854,119)**

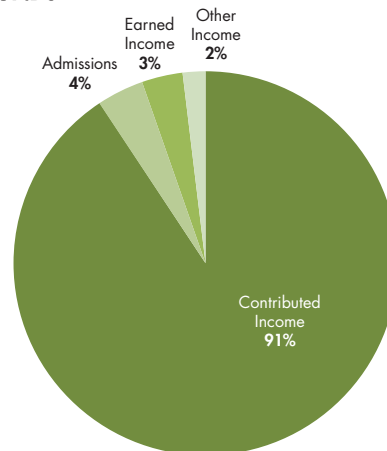
*As allocated to SFBGS by the San Francisco Recreation and Park Department

Source: San Francisco Botanical Garden Society Audited Financial Statements for the 12 months ended June 30, 2021.

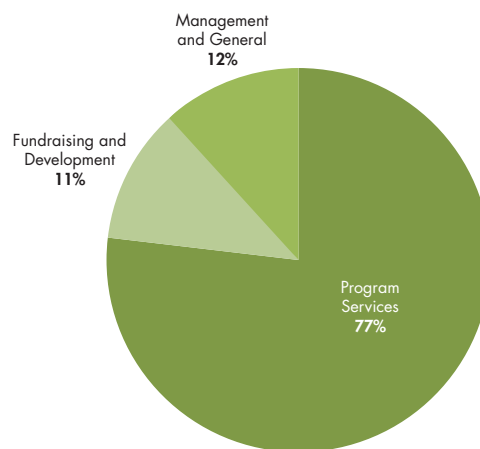
SOURCES AND USES OF FUNDS

12 months ended June 30, 2021

SOURCES OF FUNDS



USES OF FUNDS



Contributed Income: memberships, foundation grants, contributions, bequests, net revenues from fundraising events, and in-kind gifts

Earned Income: plant and bookstore sales, program fees, private rentals, and library art & book sales

Program Services: plant collections management, gardens, youth education, classes and public programs, library, bookstore, plant arbor, volunteer program, visitor services, and other program-related activities



New Nursery Groundbreaking Ceremony October 2021. Photo courtesy of James Watkins.

THANK YOU TO OUR DONORS JULY 2020–JUNE 2021

The beauty and diversity of our collections and the array of programs, tours, and events at San Francisco Botanical Garden are made possible by you, our supporters. Each gift enables us to offer unparalleled opportunities for inspiration and learning. We would like to extend our gratitude to those who generously contributed to the Garden between July 1, 2020 and June 30, 2021. 🌿

\$250,000+

Delle Maxwell & Patrick Hanrahan
Elizabeth R. & William J.
Patterson Foundation

\$100,000 to \$249,999

MSB Cockayne Fund
William & Ilse Gaede Estate
Dr. Roger & Mary Greenberg
The Hearst Foundations
The Herbst Foundation
Dr. Lawrence Pitts

\$25,000 to \$99,999

Bartlett Tree Experts
The Campbell Foundation
Eliza & Dean Cash
Nancy & Edward Conner
The Kimball Foundation
T. Dixon & Ruthanne Long
Helen & Thomas Merigan
Charitable Trust
Paul S. Nadler Family
Charitable Trust
Will & Julie Parish Family
William & Joanne Prieur
Sarah & J. Stuart Ryan

San Francisco Education Fund
Sue Ann Levin Schiff
State of California
Governor's Office
Ruth & Kenneth Wilcox

\$10,000 to \$24,999

Anonymous
Karen M. Birks & Steve O'Connor
Bothin Foundation
Tish & James Brown
Frank A. Campini Foundation
Mary Elizabeth Colton Estate
Matthew David & Cy Srisawas
Helen & Rajnikant Desai
Dodge & Cox
Anki & Larry Gelb
Pat & Marvin Gordon
Jennifer Hofmann
John Kirkpatrick
Chong-Moon Lee Foundation
Sara Malone
Amy & Gary Masino
Paul Matalucci & Tom Osborne
Carla McKay & Martha Ehrenfeld
The Joseph & Mercedes
McMicking Foundation

The Bernard Osher Foundation
Outside Lands Works
Jennifer & Alan Petersen
Else & James Rundel
San Francisco Garden Club
John Schilling
Gary & Lotte Simmons
Stanley Smith Horticultural Trust
Dr. Lubert Stryer &
Mrs. Andrea Stryer
Sustainable Futures Fund
Dr. Joanne Whitney
Diane B. Wilsey
Richard & Patricia Yerian
Magdalen Yum & King Fai Pang
Zellerbach Family Foundation

\$5,000 to \$9,999

Anonymous (2)
Don Baldocchi
Heidi Baum
Paul & Sandra Bessières
Beatrice Bowles
Shawn & Brook Byers
Catherine Cochrane
Corvid Fund
The Tully & Elise Friedman Fund
The Friend Family Foundation
Renata Gasperi
Norman Goldfarb
The John & Marcia Goldman
Foundation
Peter Good & Sara Bartholomew
Sophia Green
Anne & Jeff Katz
Richard & Valerie Knittel
KPMG
Patricia Tobin Kubal
The Stanley S. Langendorf
Foundation
Fred Levin
William Marino & Jennifer Li
Monica Martin
Dr. Nancy Milliken
Liebe Patterson
Pisces Foundation
Rick & Beth Thurber
Mary Ann Tonkin
Wendy Tonkin & Richard Cairns
Nancy Tuma
Olivia Ware
The Whitney Family

\$2,500 to \$4,999

Anonymous (2)
Harry & Linda Akiyama
Julie Chase Baldocchi
Raquel Baldocchi
Mike Barnett
Jamie & Philip Bowles
Arden Bucklin-Sporer &
Dr. Karl Sporer
Marcia Clark
Joan Cooke & Robert Lafore
Bart & Ditty Deamer
EMIKA Fund
First Republic Bank
Mary C. Fishman
Samantha Fong & Janet Tapper
Heidi Hansen & Richard Watkins
MaryLou & Fred Heslet
Susan Hunter & Brian Morrisroe
Carol Izumi & Frank Wu
Michael Kim & Jenny Yip
Susana Lee
Dr. Jack Leibman
Lin-Wills Family Fund
Stephanie Linder & Eamon O'Byrne
Josephine S. Loo
Jane Lurie
Sherrie Matza
Alison & Michael Mauze
Michael McKenna
Eva Monroe
Kyle Montes de Oca
Clare M. Murphy
O'Melveny & Myers
Wendy Pelton & Maryann Rainey
Burr Preston
Margaret & Vic Quattrin
Kathy & Corey Raffel
San Francisco Waldorf School
Patrice Scatena & David Hecht
Michael & Alison Seaman
Priscilla Stoyanof
Sandra Swanson
Jennifer Taylor & Jake Zigelman
Ryan Vong
Susy & Jack Wadsworth
Robert Ward
Harold L. Wyman Foundation

\$1,000 to \$2,499

Anonymous (10)
Sachin Agarwal
Dr. Frank & Mary Beth Almeda
Paul B. Althouse
Anthony Amendola
Jerome & Drue Ashford
Kay Auciello
Gwynn & Mitch August



Alstroemeria x hybrida 'Indian Summer'. Photo courtesy of Saxon Holt.

THANK YOU TO OUR DONORS JULY 2020–JUNE 2021

Dr. Joseph & Mrs. Clara Barbaccia
 Janice & Matthew Barger
 Marietta & Stephen Bartoletti
 Leslie & Shobhana Beaudin
 Derek & Rachel Benham
 Joan Bodenlos
 Anna C. Bolla
 Botanic Gardens Conservation
 International
 Ron & Mikhal Bouganin
 Peter Bradley & David Krimm
 Bonnie Bridges & Bill Banyai
 Pamela L. Brown
 Robert & Carolyn Bunje
 Jennifer Caldwell & John
 H. N. Fisher
 James Campbell & Adam Gavzer
 Terrie Campbell &
 James Henderson
 Brian & April Cano
 Sally Carlson & Karl Keesling
 Abby P. Chapman
 Jane Chin & James Wong
 Jan Chong
 Mina Choo
 Deborah Coleman & Steve Prittie
 Patrick Collins
 Moira Conzelman
 Elizabeth Coolidge & Jack Souders
 John Copoulos
 Charles Crocker
 Mary A. Crocker Trust
 Edie & William Dagley
 The Dejong & Erdos Fund
 Frances E. Dependahl
 Yvonne Don & Rich Shrieve
 Will Evers & Melinda Ellis Evers
 Judianne Eynon
 Justin Faggioli & Sandy Donnell
 Richard & Shawn Fallon
 Tony Farrell & Kathy Heinze
 Nancy Fee
 Kathryn Fritz & William Littmann
 Thomas & Marty Funkhouser
 Barry & Laura Galvin
 The Garden Route Company
 Jodi Gelbman
 Daisy Gerstein, Aram Gerstein &
 Hugh Gerstein
 James & Kathy Gibson
 Robert Goodman & John Bankston
 Mary & Steve Gorski
 Mary Ellen Hannibal &
 Richard Morgenstein
 Erin Heimbinder
 David Hettick & Sandra Waszak
 Dr. Mary Hufty & Dr.
 Daniel Alegria

Gayle Ing
 Missy & J. D. Jensen
 Anne Kasmar
 Ron & Barbara Kaufman
 Barbara & James Kautz
 Brandon Keefe
 Kelley Family Charitable Fund
 Kilohana e Kavika Fund
 Rob & Joyce Kurtz
 Tim & Suzanne Leonoudakis
 Scott Lewis
 Cynthia Snorf Livermore
 David & Diane Luders
 Alan Magree
 Beverly & Thomas A. Marlow II
 Victor Martinez
 John R. McCallen
 Elizabeth McMillan
 Lisa Miao & Kairen Wong
 Reed Minuth
 Mia Monroe & Stephan Meyer
 Lainie Motamedi & Aaron Johnson
 Nancy & Matthew Murphy
 Ernie Ng
 Emilie & Doug Ogden
 Amber Paul
 Mauree Jane Perry
 Marianne H. Peterson
 Regina Phelps & Dave Kieffer
 Mr. William R. Pitts
 Helen McKenna Ridley &
 Allan Ridley
 Christopher & Julie Ridley
 Roy & Louise Ritchie
 Shelagh & Thomas Rohlen
 Dawn & Ed Roth
 Christine Sculati
 San Francisco Succulent &
 Cactus Society
 Gail Secchia
 Karen Sharp
 Sally Shi & Hansong Zhang
 Jane & Tom Singer
 Betty Smith & Kent McDonald
 John Stedman
 Rick & Marcy Swain
 Sarah Swinerton
 Sean Terry
 Varnhagen Family Trust
 Diane & William Wara
 Daniel Warren & Wendy Jones
 Amanda Weitman &
 Chris Heffelfinger
 David & Barbara Whitridge
 Mark & Suzanne Wieland
 Crystal Wilson
 Patricia Wipf
 Rex Wolf

Rosemary & Sheldon Wong
 Woodside-Atherton Garden Club
 Phil & Julie Zigoris

\$550 to \$999

Anonymous (2)
 Will Baldocchi
 Cecilia & Bobby Bell
 Faith A. & Stephen Brown
 Sharon & Richard Chackerian
 Peter Chuang
 Jillian & Donald R. Clark
 Kyle Clark
 Travis Clark
 Dr. Suzanne Coberly & Jeff Haas
 Kris Coffey
 Joseph James Collins
 Ellen Copeland
 Nicole Corson
 Patricia Deering &
 Christine Collins
 David Deiwert & Alan Farr
 Maria E. Dichov
 Roger Dodd & Roberta McGowan
 Betsy Dodd & Jim Boddy
 Christopher & Karen Duderstadt
 Jan Duffy
 David Eger
 Gretchen & Dick Evans
 Herman & Lenore Fifer Estate
 Perry & Charles Freeman
 Diane L. Gibson & Lawrence
 S. Bazel
 Phil & Emily Ginsburg
 Rosemary L. Green
 Celia Harms
 Mary Hudson
 James & Deborah Iacoponi
 Elizabeth & Paul Ireland
 Sarah Ives
 Barbara Jones & John Auerbach
 Dawn Kamalanathan &
 Jon Abendschein
 Ron & Cheryl Karpowicz
 Joan Kugler & Paul McCauley
 Marissa Leshnov
 Andrea LoPinto & Robert Carr
 Jay & Kelly Markello
 Sarah Maxwell
 Frederick & Beverly Maytag
 Justin & Kathleen McCarthy
 "The Purple Lady Fund"
 Barbara Meislin & Stuart Kaplan
 Alicia Molder
 Julie Morgan
 Laura Murphy & Daniel Freeman
 Saul & Susie Nadler
 Madan Paidhungat

Anne & Craig Paxton
 Laurie Poston & Brian Ferrall
 Marilyn Presten
 Melinda Ramm
 Martha Rose
 Gregory Sargent
 Patricia Scales
 Saibal & Beethi Sen
 Douglas Shaffer & Walter Rask
 Susan Stuermer Thomas
 Anthony & Christopher Tse
 Jillian & Blake Tyrrell
 Belinda Vega
 Toni H. Wagner

\$250 to \$549

Anonymous (15)
 Susan Abe
 Keren & Bob Abra
 Nareg Aghjayan, Adour Aghjayan
 & Helen Aghjayan
 Catherine Archbold
 Lillian & Adam Archer
 Ann Griffith Ash
 Julie Ask & James Kaentje
 Matt Ayotte
 Chase Baldocchi
 Flora Banuett
 Celia C. Barbaccia
 Jessa Barzelay
 James Bays
 Daniel Belik & Akemi Fujimoto
 Eden Benavides
 Barb Biancalana & George Gnos
 Keith Billick
 Annette Billingsley &
 Terrance Bergmann
 Aaron Binns
 James & Sam Blattner
 Julie & Christopher Boes
 Michael & Nancy Borah
 Daniel Bornstein &
 Kristin Murtagh
 Tammy Braas-Hill
 Tony Bredehoeft, Grace Poon
 Katjusa Brejc
 Linda Brewer
 Ellen & C. Howard Brown
 Lisa Brown & Daniel Handler
 Steve Elprin & Claire Bunton
 Sandra K. Burch & David Brower
 Rita Burgess
 Business Professional Insurance
 Associates
 Patricia & Michael Busk
 Ted Camesano & Joseph Lam
 James Carmack
 Keith Chadbourne

THANK YOU TO OUR DONORS JULY 2020–JUNE 2021

Jennifer Chan	Tom Hurley & Loren Chu	Michelle Mackenzie-Menendez	Bob Skinkle & Félix Vega
Kathleen Chang	Aditi Iyer	Stephanie Metz	Kevin Smokler & Sarah Hebert
Joan Chaplick	June Jackson	Nader Meykadeh	Marianna Stark & Sam Perry
Eunice Chee	Barbara Jacobitti	Christopher J. Minnes	Robert Steidl
Courtney Clarkson & Roy Leggitt III	Joseph & Marisa Jennings	Sarah Misra	Rose & Tim Stewart
Jamie Close & Bret Dezordo	Herbert L. Jeong	Eugene & Bonnie Moffett	Linda Stiles
Zachary & Patricia Coney	Rupert & Maryellie Johnson	David Monsees & Caroline Morris	Peter S. Straub
Bruce Conklin & Bonnie Preston	Greta Jones	Scott Montgomery	Douglas P. Stuart
Ruth Conroy	Marjory Kaplan	Lida & David Morgenstein	Sheila Stuart & Lauren Downs
Elena Court	James & Linda Kasper	Thomas & Susan Munn	Rod Stutt
Jacquie Williams Courtright & Tom Courtright	James & Ann Kauffman	Patsy & Ricardo Muñoz	Barbara Styne
Crane Curran	Patricia & Karl Kaussen	Marguerite C. Murphy	Karlyn Sugai
Eliot Davidoff	Mary J. Kelley	Eileen Murray & Frederick Stout	Gary Sullivan & Tim Lynn
Elizabeth DePaola	Judy Kelly	Laurel Myers	Adrienne & Anthony Swarthout
Joan T. Dea & Lionel Conacher	Stephen Kempainen	Marie Narlock & Rich Narlock	Shannon Sweeney & Rose Tocchini
Curtis E. Dennison & Julio Garay	Janice Kendall & D. Wesley Wiley	Lisette & Ray Narragon	Shadya Takla
Armen & Nelly Der Kiureghian	Elizabeth & Ryan Lucia	Philip Nonneman & Dawn Williamson	Joan McLellan Tayler
Linda Dolan	Christine B. Kibre	Sandra Norberg	Willard & Kate Taylor
Tara Donohue & George Pfeffer	Kate & Hyo J. Kim	Jennifer O'Brien	John & Carry Thacher Family Fund
Dr. Kathy E. Down & Mr. Gregory J. Kelly	Paula Kimbro	Andrew Ogus & Pete Bullard	Jay Thayer
Helen J. Doyle	David & Niloufer King	Barbara Oleksiw	Katharine Wallace Thompson
Kathleen Duffy & Greg Lyon	David King & George Palis	Susan & Richard Olness	Chris Tso
Jennifer Dungan	Edward & Debra Knych	Gerald O'Sullivan	Richard G. Turner
Francesca Eastman & Edward Goodstein	Prudy Kohler	Edmund W. Ow	Charles Udell & Judy Landecker
Zoellen Eichen	Tina Kroot & Jennifer Kroot	Jenni Parrish & Gerald Clark	Stanley & Abbie Urban
Jannette Engel & Donald Oaks	Morgan Kulla	Cathy & Chuck Patterson	Irina & Sergei Varshavsky
Jacqueline & Christian P. Erdman	Daniel & Sarah Kushner	Connie Pelissero	Jared Vermeil & Ragnar von Schiber
Philippe Farhi	Connie Lam & Stuart Lovinggood	Patricia Peper & Roger Phillips	Betty Packard Voris
David Featherstone	Stephen & Vanessa Lambright	PG&E Employees	Michael & Johanna Wald
Bob & Rhodora Fiorello	Brendan V. Lange	George Pitts	Anne Marie Walker
Sandra Fluke	Elaine B. & Richard J. Larkin	Natalie Price	Beth Wallace
Sara Flynn & Donald Libbey	Charles & Polly Laurenson	Ralph Protsik	Vivian Walsh
Lynn Fuller	Patricia Lawton	Laurel & Gerald Przybylski	Rube Warren
Buck Gee & Mary Hackenbracht	Sheila & Don LeClaire	Helen Hilton Raiser	Wallace & Eve Wertsch
Arup & Vinita Ghosh	Stuart & Sarah Lee	Kamini Ramani & Omar Khan	Kathleen Wesner & Daniel Sullivan
Sheena Gomez	Myron & Zoe Levin	Anthony & Maria Gloria Rando	Kate Whitcomb & Dan Jamieson
Clare Gordon	Christine Lim	Mark & Victoria Rennie	Robin White
Kate Gray	Steve Lloyd	Carol Dependahl Ripperda & Jerry Ripperda	Roger Williams
Sharon Grof	Charlene Low	Russ Roeca & Rich Vernon	Anne & Kirke Wilson
Hui Guo	Robert & Heather Low	Diana & James Rogers	Dana Winn
Patricia Hanlon	Richard & Molley Lowry	David Rorick	Jim Wittenbrook
Anita Hansen	Karen Lundin	Susan Rosen	Dorinda Wong
Kimberly Harmon	Diane Lynch & Leslie O. Lynch, Jr.	Sally & Toby Rosenblatt	Elza Wong & John Thoelecke
Elisa Heikkila & Milan Delor	Jim Lynch	Talia Rowen & Justin Wyckoff	Emma Wong
Alfred & Katherine Herbermann	Bonnie F. Magid	Bill & Alice Russell-Shapiro	Wendy Wong
Tom Hertenstein & Holly Sherratt	Henry & DeAda Mally	Ellen Salwen, PhD & Joshua Schwartz	Dennis & Madelyn Yeo
Steven R. Hibshman	Marin Garden Club	San Francisco Orchid Society	Eleanor Yim & Teresa Anne Yim
Richard Hilkert	Fay Mark	Michele Scanlon	Matthew Young & Dino Terziz
Hagan Hinshaw	Robert Watts, M.D.	Karla Schiemann	Jane & Mark Zuercher
John D. Hixson	Sally Maske & Chris Radich	Phil Schlein	
Mary S. Holder	Gail Mason	Gloria Schulz	
Sherry & Mark Hood	Claire McAuliffe	Joseph Sciortino	
Robyn Hughes	Kim McCall	Pamela Scott	
George & Leslie Hume	Susan & Katie McGuire	John & Mina Shea	
	Michael McKechnie & Jaime Reyes	Anne Simon & Donald Heller	
	Julie McMillan		
	Heather Meidinger		
	David Melnick		

TRIBUTE LISTINGS

IN HONOR OF

Agarwal Family
Joseph C. Barbaccia
Celia C. Barbaccia
Mary Lou &
Stephen Bartoletti
Bodenlos Family
Constance C. Bowles
Beatrice Bowles
Dorothy Clifford
Stanley Langendorf Foundation
Bob Dagley & Betty Bogart
Edie & William Dagley
Jim & Kathy Gibson
Annette Huddle
Janet Jacobs & Terry Gomes
Stuart Lovinggood &
Connie Lam
Adrienne Edwards
Violet E. Leo
Jamie & Philip Bowles

Dr. Irene Liao
Joanna Rifkin
Delle Maxwell
Dr. Mary Hufty &
Dr. Daniel Alegria
William & Amelia Meffert
Stephanie Montes de Oca
Kyle Montes de Oca
Beatrice Nickel
Bowles Morse
Beatrice Bowles
Bud Murphy
Anonymous
Claire Myers
Marianna Stark
Ed & Val Paul
Amber Paul
Helen McKenna Ridley
Linda A. Kosten
Ed & Dawn Roth

Sarah Ryan
Clare Ryan
Sue Ann Levin Schiff
Myron & Zoe Levin
SFBG Children's
Walk Guides
Judianne Enyon
SFBG Green Team
Anonymous
Frank & Karen Sharp
Helen Sheehan
Anonymous
Leo Soltis
Anonymous
Janet Strobel
Bonnie Bridges & Bill Banyai
Richard Swain
Roy & Louise Ritchie
Visitor Experience Team
Elsa Lundy

Nicolette Telech
Randy & Linda Miller
Terri Wyrko
Noah, Sophia & Isabella Terry
Sean & Lana Terry
Anne Wellington
Ellen Hamingson
Josh Wheeling
Carol Thomson & Paul Wheeling
Suzanne Wieland
Dodge & Cox
Ruth Wilcox
Fred Levin
Celia Harms
Elaine S. Wilson
Stefanie & Everett Rosemond
Richard & Patricia Yerian

IN MEMORY OF

Joe & Faye Auciello
Kay Auciello
Marilyn Baldocchi
Don Baldocchi
Raquel Baldocchi
Dr. Joseph & Clara Barbaccia
Ann Dyer Cervantes
Elena Court
Tony Farrell & Kathy Heinze
George & Leslie Hume
Prudy Kohler
Manderville Garden Company
Janet Moyer &
Michael Hofman
Patricia Blair Pierce
Joan McLellan Tayler
Richard G. Turner
Donald & Marilyn Baldocchi
Nancy Fee
Julie Brook
Anonymous
Sara Pinkert
Marlene Burke
Anonymous
Netzali Julianna Can
Catherine Cochrane
Young Hi Choo
Mina Choo
Ryan Baxter Cochrane
Catherine Cochrane
James "Barry" Connolly
Jennifer Hofmann
Tara Condell
Tenny Lee
Jacqueline Cowell
Lisa Lyne
Marilyn Emma Dahm
Larry A. Dahm
Patricia DeVlieg
Mike Barnett
Tanya L. Fimby
Tilly Roche Clark

Bill Gaede
Robert & Carolyn Bunje
Mary & J. D. Jensen
Carol Gilbert
Pamela L. Brown
Libby Ginsberg
Romney Lange
Ruth Bader Ginsburg
Anonymous
Jane Affonso
Tess Barbieri
Bridget Patricia Clinton
Joan Cooke & Robert Lafore
Monica Martin
Delle Maxwell &
Patrick Hanrahan
William Rodarmor
Lucy & Thomas Sponsler
David & Barbara Whitridge
J. Wong
Gary Joseph Gisler
Samantha Fong
Karen Tapper
Larry Haimovitch
Anonymous
Difa Hamins
Dr. Lubert Stryer &
Mrs. Andrea Stryer
Helena Hom
Susan Abe
Mary Ann Jahnke
Robert McKinney
Alexander Jew
Rhonda & Jonathan Jew
Ted Kipping
Peter Good & Sara Bartholomew
Jonathan Kleks
Kyle Clark
Marcia Clark
Travis Clark
Amy & Gary Masino
Bud & Elsie Knittel
Richard & Valerie Knittel

Walter & Wanda Koniuk
Richard & Valerie Knittel
Angela Kriesse
Sara Baxter
James Lee
Susana Lee
Nancy Livingston Levin
Fred Levin
Joseph W.D. Loo
Josephine S. Loo
Elizabeth Massie
William & Mary Land
Rae & Sol Matza
Sherrie Matza
Aida Minor
Daniel Minor
Ran Oehl
San Francisco Waldorf School
Oliver Parish
Will & Julie Parish Family
Mary Pitts
Adour Aghjayan
Helen Aghjayan
Nareg Aghjayan
Dr. Joseph & Clara Barbaccia
Mary C. Fishman
Linda & Jerry Goldstone
Marta Johnson
Kilohana & Kavika Fund
Kirke Mechem
Caren Meghreblian &
Harry Bernstein
George & Lynn Meyer
James Lee Naughton
Angela Oliveri
George Pitts
Dr. Lawrence Pitts
William R. Pitts
Peggy & Bob Ratcheson
Toni H. Wagner
Diane & William Wara
Lisa Wedeen
Dr. Joanne Whitney
Ryan Vong

Mathilde Prado
Jay Kimura & Alicia Lowe
Eleanor Yim &
Teresa Anne Yim
Elena Rodezno
Janet Rose
Conway L. Savageau
Anthony Amendola
Rosemarie Intersimone
Scatena
Patrice Scatena
James "Jim" Simmons
Lotte Simmons
Bernard Weisz
Helene Weisz &
Richard Lieberman
Sajee Srisawas
Matthew David &
Cy Srisawas
Georgi & Elenka Stoyanof
Priscilla Stoyanof
Edith Tabak
Elizabeth Lorelei Thacker
Mark Techler
Millicent Hamilton
Apple Walker
Perry & Charles Freeman
Winifred Warren
Geoffrey Smith
George & Susan Weiss
Catie Farabat
Ernest Wertheim,
Landscape Architect
Jacquie Williams Courtright
& Tom Courtright
Robert Jeffry Womack
Robert Ward
Lucy Yang
Arlene & Keith Brians
Beth Wallace
Marina Zarkhina
Aram Gerstein
Daisy Gerstein
Hugh Gerstein



LEGACY CIRCLE

A GIFT FOR THE GARDEN'S FUTURE

San Francisco Botanical Garden recognizes the many friends who have advised us their estate plan includes a provision for the Garden.

We are deeply grateful to these generous individuals and families.

Anonymous
Dr. Frank & Mary Beth Almeda
Paul Althouse
Ruth Ann Armstrong
Drs. Diana Silver Arsham &
Gary Arsham
Barbara Austin
Tess Barbieri
Les Bowman & David Merrill
Peter Bradley & David Krimm
Zachary & Patricia Coney
Joan Cooke & Robert Lafore
Larry Dahm
Bart & Ditty Deamer
Helen & Rajnikant Desai
Maria E. Dichov
Irene Balcar Dillon &
William Dillon
Philip & Marina Early
Veronica Espada
Judianne Eynon
Mary C. Fishman
Dionne Fountain
Susan & Marvin Friedman
Renata Gasperi
Tom Gee
Thomas Hann
Sidney Hollister
Marsha Irwin &
Richard Pesqueira
Mary Anne Kayiatos
Dr. Jack Leibman

Carrie Macdonald
Sara & Ronald Malone
Maria Mangold &
Stephen Hunter
Monica Martin &
Buck Delventhal
John McCallister
Dr. Linda Mitteness &
Dr. Judith Barker
Michael & Eva Monroe
Ned Moran & Kevin Rillera
Carol Mowbray
Elin Ouye & Dennis Sherman
Dr. Lawrence & Mary Pitts
Burr Preston
William & Joanne Prieur
Kathy & Corey Raffel
Nancy Russell in memory of
Beverly Russell
Geoffrey W. Scammell
Douglas Shaffer & Walter Rask
Naomi Shibata
Natalie O. Shuttleworth
Sheila Stuart & Lauren Downs
Charles Vadalabene
Henry & Gloria Wachs Trust
Gary Weiss & Charles Stinson
Ruth & Kenneth Wilcox
Rosemary & Sheldon Wong

For information on the benefits of making an estate gift and to join the Legacy Circle, please visit: sfbg.planmygift.org or call 415-661-1316 ext. 312.



LEGACY
CIRCLE



San Francisco Botanical Garden
at Strybing Arboretum

Golden Gate Park
1199 Ninth Avenue at Lincoln Way
San Francisco, CA 94122

RETURN SERVICE REQUESTED

Nonprofit
Organization
US Postage
PAID
Permit 11318
San Francisco, CA

Magnolia campbellii 'Strybing White' with camellias in the foreground

