

SAN FRANCISCO BOTANICAL GARDEN

2022 ANNUAL REPORT

YEAR IN REVIEW: BY THE NUMBERS

JULY 1, 2021 – JUNE 30, 2022



TOTAL ADMISSIONS REVENUE

\$1,824,435 from fees paid by nonresident visitors – a new record and 48% increase from the prior year



VISITATION

539,294 visits to the Garden, a new record for annual visitation, 58% of which were free of charge



MEMBERSHIP

6,398 member households—a 17% increase year over year

PLANT SALES

7,300 plants sold to the community



YOUTH EDUCATION

12,345 children served through experiential school, summer, and family programs



LIVING COLLECTIONS

12,098 accessions in the Garden's living collection, comprised of **7,732** different kinds of plants, 12% of which are of wild collected origin



VOLUNTEERS

410 volunteers who come individually or participate in corporate, school, and service organization projects

10,583 hours contributed by volunteers to virtually every aspect of the Garden's operations

DOCENTS

4,109 visitors engaged by docents



Cover image: Divya and Nayan celebrate their marriage in the Celebration Garden. One of 138 weddings in the Garden this year. Photo courtesy of Arrowood Photography

Photos courtesy of Garden visitors via Instagram and beyond:
@romonebowens; @emi.travelsta;
@maryam_maryamuuu; @dina_saalisi_healing_arts; Ai Buenafe; Joel Riddell;
@snakebirdcarb; Steve Bell;
@anastasiyamartphoto; @romanoofearth



Dear Garden Supporters,

This year's annual report marks an exciting turning point for San Francisco Botanical Garden. On July 1, 2022, we officially extended our successful partnership with San Francisco Recreation and Park Department to bring together the three Gardens of Golden Gate Park: Conservatory of Flowers, Japanese Tea Garden, and the San Francisco Botanical Garden at Strybing Arboretum. We are grateful to Mayor London Breed for sponsoring a resolution to make this merged entity possible and to the San Francisco Recreation & Park Commission and Board of Supervisors for their unanimous support of this effort. We also want to thank YOU for all you've done to strengthen our organization and enable us to expand our reach.

We are very excited that garden memberships are now universal across all three Gardens. San Francisco residents now can visit the Conservatory of Flowers and Japanese Tea Garden free of charge, as they have enjoyed at the Botanical Garden. This improvement in access is showing significant increases in San Francisco resident visitation at the Gardens. For those visiting our city, a very popular multi-garden ticket launched encouraging deeper engagement with our Gardens. And, thanks to the leadership of Supervisor Gordon Mar, veterans and active-duty military personnel now visit the Gardens for free, regardless of residency.

As we look to the future, we engaged our community through a survey, which saw robust participation. We learned that the public wants us to prioritize horticultural and facility maintenance, plant conservation, and provide more interpretive resources. We look forward to incorporating this critical feedback as we finalize our new strategic plan. While there will be many specific initiatives within the plan, a high-level goal will be a model public/private partnership that strives for excellence and delivers on our mission to connect people to plants, the planet, and each other.

Additionally, we recruited dynamic new talent to our Board of Directors and Leadership Team to help launch the Gardens of Golden Gate Park. For this report, we've focused our accomplishments at the Botanical Garden over the past year. Next year we look forward to reporting on our progress across all three Gardens.

Once again, over the past year, we've experienced record-breaking visitation at the Botanical Garden with 539,294 visits! This is nearly 70,000 more visits than the previous year and exceeds all pre-pandemic records.

As we celebrate the 50th Anniversary of the Helen Crocker Russell Library of Horticulture, we're thrilled to have restored the library's opening hours to pre-pandemic levels.

It was wonderful to bring our annual Garden Feast event back in person after two years of virtual events. Our horticultural team did an amazing job readying the Celebration Garden for its long-awaited debut. And our special guest speaker, Dr. Robin Wall Kimmerer reminded us all why our work matters so much to the health and future of our communities.

Construction is well underway on our new nursery that will enable us to play a more active role in plant conservation, enhance our living collections, and provide the public with unique plants to purchase and bring home.

School groups are returning to the Garden for our youth education programs. We've relaunched a teen internship program and continue to serve children and families with Bean Sprouts Family Days, camp, and after-school programs.

All this, and more, is made possible through the hard work and generosity of our supporters, volunteers, and staff. Thank you!

Stephanie Linder, Chief Executive Officer
GARDENS OF GOLDEN GATE PARK

Joseph Rothleutner, Garden Director
GARDENS OF GOLDEN GATE PARK
SAN FRANCISCO RECREATION & PARKS

MISSION

San Francisco Botanical Garden connects people to plants, the planet, and each other.

VISION

San Francisco Botanical Garden will be cherished and supported locally and recognized internationally for beauty, diversity of plant collections, educational programs, and inspiring conservation.

VALUES

San Francisco's unique Botanical Garden inspires visitors with the extraordinary diversity of rare and unusual plants that can be grown in coastal California. Through its programs and displays, the Garden cultivates the bond between people and plants and instills a deeper understanding of the necessity to conserve Earth's biological diversity. As a public/private partnership between a community-based nonprofit organization and the San Francisco Recreation & Parks Department, and a beloved San Francisco institution, we are committed to transparency, cultural diversity, inclusion, and environmentally responsible practices. We are proud to be a public garden, accessible to all and grateful to the funders who help sustain us.

SAN FRANCISCO BOTANICAL GARDEN SOCIETY

San Francisco Botanical Garden
at Strybing Arboretum

Golden Gate Park
1199 9th Avenue
San Francisco, CA 94122
415.661.1316
sfbg.org

501(c)(3) non-profit organization,
tax ID 94-6050168

Board of Directors

Delle Maxwell, *Board Chair*
Carol Izumi, *Vice Chair*
Jennifer Petersen, *Treasurer*
Lisa Serwin, *Secretary*
Don Baldocchi, *Past Chair*
Dr. Joseph C. Barbaccia
Tish Brown
Jane Chin
Lucy Fisher, PhD
Adam Greenspan
Zane Gresham
Dr. Vanessa Handley
Mary Ellen Hannibal
Susan Hunter
Cristina Jones
Claire Myers
Saul Nadler
Joseph Rothleutner
Sarah Ryan
Fei Tsen
Dr. Joanne Whitney

Ruth Wilcox
Susan Zeter
Stephanie Linder, *Chief Executive Officer*

Staff Leadership

Ahmad Anderson,
Director of People & Culture
Brooke Bedingfield,
Director of Philanthropy
Jamie Chan Ed. D.,
Director of Programs & Partnerships
Michael Christman,
Director of Finance
Vanessa Fajardo,
Director of Operations & Administration
Ryan Guillou,
Director of Collections & Conservation
Annette Huddle,
Director of Education
Brendan Lange,
Director of Marketing & Communications

Stephanie Linder,
Chief Executive Officer
Joseph Rothleutner,
Garden Director,
San Francisco Recreation and Park
Nicolette Telech,
Chief of Staff

SAN FRANCISCO RECREATION & PARKS

Mark Buell, *President,*
Recreation and Park Commission
Kat Anderson, *Vice President,*
Recreation and Park Commission
Phil Ginsburg, *General Manager*
Dennis Kern, *Director, Operations*
Eric Andersen, *Superintendent,*
Parks & Open Space
Joseph Rothleutner, *Garden Director,*
San Francisco Recreation and Park



Annual Report Production

Brendan V. Lange,
Editor & Project Manager
Christine Taylor, *Designer*

This publication is printed on
recycled paper with soy ink.

NEW LEADERSHIP

NEW BOARD MEMBERS

V. Fei Tsen is the President and CEO of Windflower Properties which develops mixed use, transit-oriented multifamily housing. She has over 40 years of experience in real estate finance and development in the private and public sectors. Fei is a thought leader on community development and revitalization, housing policy, and affordable housing strategies. As a Commissioner of the Redevelopment Agency in San Francisco, she was instrumental in the planning and financing for Yerba Buena Gardens. As a civic leader, she has served as a commissioner and led task forces at the behest of four different Mayors in San Francisco and the Mayors of Berkeley, Oakland, and San Jose. She is currently the President of the Board of Directors of the Treasure Island Development Authority (TIDA).

Zane Gresham recently retired as a partner in the international law firm Morrison & Foerster LLP where he worked for forty years. His professional experience includes resolving complex land use and regulatory issues, creating biopharmaceutical and corporate campuses for international enterprises, and guiding airport and water public/private partnerships in the US and internationally. He acted as pro bono counsel to The Nature Conservancy on projects such as the Three Parallel Rivers in Yunnan, China, the Lewa Conservancy in Kenya and the Komodo National Park in Indonesia. He has served on multiple boards and is a member of the Advisory Council of the Conservatory of Flowers.

Lucy Fisher retired from the Dean's Office of Nursing at University of California, San Francisco, most recently serving as the curriculum director in the UC system's first program in interprofessional leadership in healthcare. She holds a master's degree in teaching from Stanford and a PhD in nursing from UCSF. Born and raised in Honolulu, Lucy grew up with a Japanese garden in her backyard and her father's orchid collection. Lucy has been a member of the Friends of the Japanese Tea Garden since 2017, helping raise funds to restore the Pagoda and other iconic features and enhance community engagement. Lucy serves as a board member and is co-chair of the Cultural Heritage and Sustainability Committee for the Japantown Task Force.

Susan Zetzer is a results driven senior sales executive combining 30+ years experiences in consultative sales sector with exceptional skills in sales, process improvement, strategy, account infrastructure, and working in large collaborative organizations. Susan joined KPMG in 2001 and after moving through multiple roles, she now serves as KPMG lead partner to Fortune 100 companies, both domestic and global. Susan has served on the board of Jewish Vocational Services (jvs.org) as well as Congregation Sherith Israel (US National Register of Historic Places 2010), involved in board governance, fundraising, and capital campaigns.

Adam Greenspan, partner at PWP Landscape Architecture, has been the lead designer on a wide range of projects including public parks, campuses, mixed use developments, competitions and estates. Adam's background in art and sociology, combined with years of horticultural practice support an integrated approach to design. Adam's recent projects include: the Newport Beach Civic Center Park in Newport Beach California, Constitution Gardens on the National Mall in Washington DC, The Transbay Transit Center Park, San Francisco, Marina Bay Sands Integrated Resort, Singapore, and Glenstone in Potomac, MD. Adam has served on public art selection panels for the City of San Jose and the City of Santa Monica and currently serves on the Board of Directors for the Landscape Architecture Foundation. In November 2022, Adam was elevated to a fellow of the American Society of Landscape Architects.

Cristina Jones is an intentional storyteller with a focus on action, impact, and culture. Cristina and her team use world-class storytelling to reach new audiences, spotlighting Salesforce.org as the technology platform built to power purpose. She believes that when people and communities thrive, business thrives. Her team integrates customer advocacy, media partnerships, and influencer strategies to build lasting relationships. In 2020, Cristina was named to the Ebony Power 100, and was featured in the World Woman Foundation's #ShesMyHero campaign.



New Board Members: Fei Tsen, Zane Greshman, Lucy Fisher, Joe Rothleutner, Susan Zetzer, and Adam Greenspan. Not pictured: Cristina Jones

NEW LEADERSHIP STAFF

Vanessa Fajardo, Director of Operations and Administration, has over a decade of experience in operations and leadership in non-profit management, having worked at the Conservatory of Flowers for over 11 years before joining the Gardens of Golden Gate Park. She is currently pursuing her Executive MBA at the University of San Francisco. Vanessa is skilled at building new teams and creating efficiencies and is especially dedicated to the development of staff members and new business. Vanessa believes there is no place in all of San Francisco more appealing to all five senses than the Conservatory of Flowers.

Joseph Rothleutner, Garden Director, joined the Gardens in March. Joseph represents the onsite leadership of the San Francisco Recreation and Parks Department in the public-private partnership and also serves on the Gardens Board of Directors. Joseph has a background in horticulture and facilities management having worked in public gardens for over 10 years, including Santa Barbara Botanic Garden, Lincoln Park Zoo, and The Morton Arboretum. Passionate about people's enjoyment of gardens, Joseph spends much of his own time gardening at home and visiting other public gardens across the Bay Area. Joseph received his M.S. in Horticulture from Oregon State University and his B.S. in Urban Forestry from University of Maryland.

Brooke Bedingfield, Director of Philanthropy, joined the Gardens in June, bringing broad experience leading and implementing fundraising programs, business management, and marketing communications. Brooke has worked at College Track, Brown University, Aspen Education Foundation, and the Saint Francis Foundation in roles spanning head of development, major gift officer, and executive director. Prior to her nonprofit work, Brooke was an investment and asset management professional, working in leadership roles and with clients on complex investment solutions, including management of nonprofit endowments.

Ahmad Anderson, Director of People and Culture, joined the Gardens in August 2022. He has over 20 years of experience driving business improvements with an expertise in human resources. He has led DEIB/JEDI initiatives and developed organizational strategies at many organizations from Fortune 500 companies, non-profits, and educational institutions. He also brings civic experience as the City of Richmond's Chair of Economic Development Commission; member of the Board of Directors of Richmond's Chamber of Commerce; a

former Executive Committee member of NAACP for the City of Richmond; Vice President of Oakland Rotary Endowment; member of University of California, Berkeley Alumni Association Board of Directors; author of the University of California Berkeley Chant "This is Bear Territory;" and 2022 CAL Athletics Hall Of Fame Inductee. Ahmad is also the CEO/Founder of Designing Effective Organizations – Human Resources and Business Consulting. Ahmad's passion is making sure there is access and equity for ALL.

Jamie Chan Ed.D., Director of Programs and Partnerships, joined GGGP in August 2022, previously from the Center for Science and Math Education at San Francisco State University (SFSU) where she served as Operations & Program Director. Her long career in higher education includes teaching as adjunct faculty in education and the biological sciences. Jamie received her Doctor of Education in Educational Leadership and Administration this year and received an M.S. in evolutionary biology in partnership at the California Academy of Sciences and B.S. in invertebrate zoology from SFSU.* As a Master Gardener, she co-founded a food security project in SF called Sisterhood Gardens and is the owner of Fog City Gardener, a garden education and consultation service. Jamie is a 4th generation San Franciscan who is passionate about gardens as places for education and social activism. ** She lives in SF with her partner and two children, and you will find her gardening, beekeeping, and tending her urban chickens in her free time.

Michael Christman, Director of Finance, was born and raised in San Francisco. At 13 months, he appeared on the front page of the local paper in an article titled, "Fingers that Saved a Baby." He joined the Gardens in October 2022 as Director of Finance. He has over 18 years of experience with non-profit hospice providers in Northern California and has spoken at several national hospice conferences on cost containment studies. Prior to his non-profit work, Michael was a Vice President at Bank of the West and a Director at Cost Plus World Market where he managed accounting operations, purchasing, and corporate travel. He served on the Board of Directors of Music in the Mountains and is a former president of the local Sunset Toastmasters club. He lives on Potrero Hill in San Francisco with his partner and two dogs.



New Leadership Staff: Vanessa Fajardo, Joe Rothleutner, Brooke Bedingfield, Ahmad Anderson. Not pictured: Jamie Chan and Michael Christman

GARDEN COLLECTIONS

MAGNOLIA GRAFTING PROJECT

This past year great momentum has been made to further develop our Magnolia collection and better connect it to gardens around the country.

Through a gift by Norman Goldfarb, the Garden was able to build on the learnings of last year's magnolia grafting project to share plants between 6 botanical gardens. Two trips were conducted this past year to both California and the Southeast United States where cuttings of nearly 80 accessions were collected from all partner gardens. While collecting was the main focus, it was also a great opportunity to meet staff at the different gardens and compare how different species grow across the country. This past year over 100 plants have been produced from 24 accessions of 20 species, which will be distributed to botanical gardens interested in diversifying their collections. Some exciting new species amongst many others shared by our partners include *Magnolia kachirachirai*, *Magnolia lamdongensis*, *Magnolia tarabumara*, and *Magnolia changhungtana*.

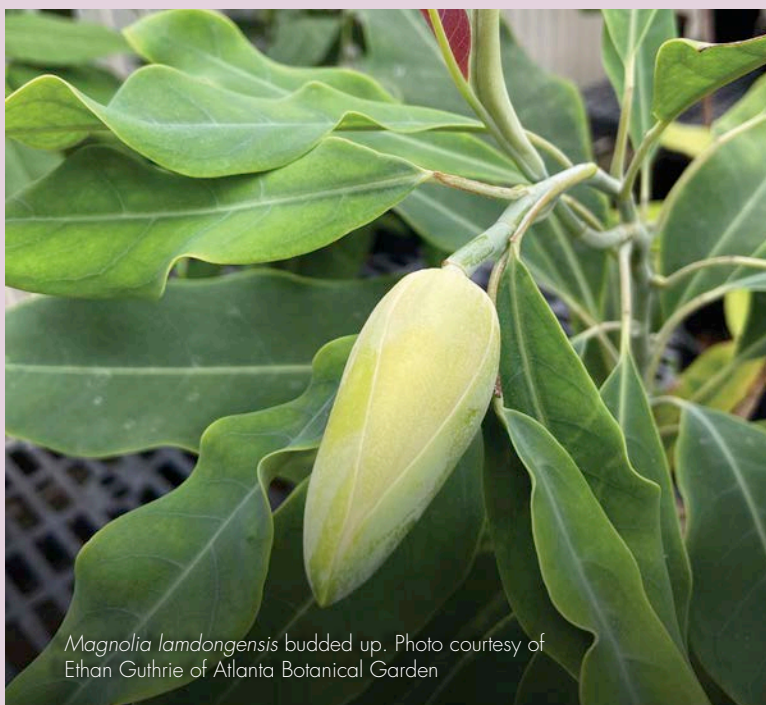
This work to spread threatened Magnolias across multisite collections is key to their long term preservation as each garden acts as an insurance policy to all the others. More plants are still propagating slowly and we are hopeful for another batch to be shared in early spring of 2023.



Endangered *Magnolia dawsoniana* flowers in the Garden



Project-grown cuttings of the endangered, Taiwan endemic *Magnolia kachirachirai*



Magnolia lamdongensis budded up. Photo courtesy of Ethan Guthrie of Atlanta Botanical Garden



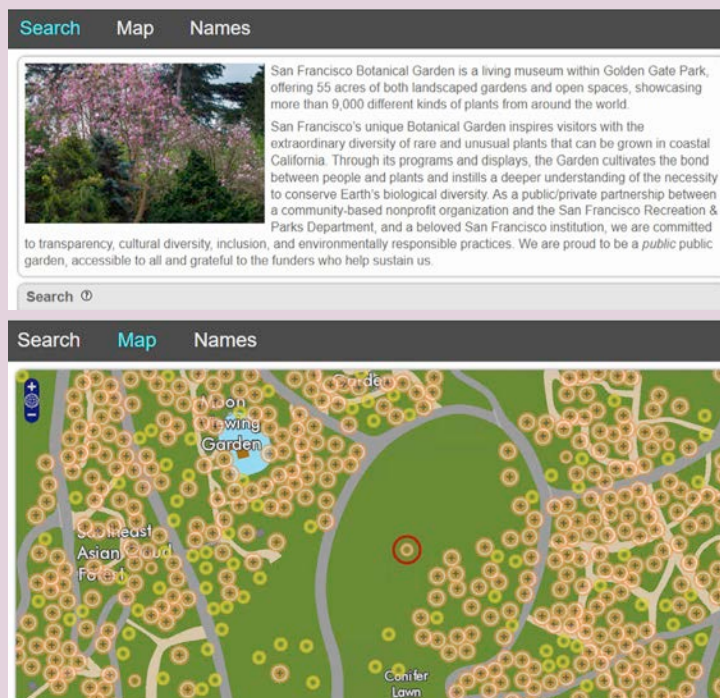
Garden's Director of Collections & Conservation Ryan Guillou with key project contributors Dr. Kevin Parris, Arboretum Director at Spartanburg Community College and Leanne Kenealy Atkins, owner of Budwood Farm.

GARDEN EXPLORER

The Garden transitioned to the use of a new plant records database IrisBG in early 2020, allowing for a more robust way to capture and share information about the Garden's living collection.

Since then, we have been able to expand its access with Garden Explorer, a web-based portal allowing us to share the Garden's collection with the public in a user-friendly format. Within SFBG's Garden Explorer you can find plant lists, detailed information on specific types of plants, thousands of photos, and maps of the collection. This resource allows visitors, researchers, volunteers, and staff to gain a better understanding of our diverse taxa and engage with more information than is able to fit on a label.

The site also holds thousands of photos that have been taken of individual plants in the Garden over the years, enabling even those who cannot come to the Garden in person to experience this special place. Expanding access to the collection via Garden Explorer and IrisBG was made possible with support from the Stanley Smith Horticultural Trust and the Institute of Museum and Library Services. To learn more and use this tool please visit sfbg.gardenexplorer.org



NEW PLANT NURSERY

The new nursery is the heart of San Francisco Botanical Garden and will greatly enhance our conservation efforts and help us protect global biodiversity, engage volunteers, expand our retail offerings, and steward our living plant collections.

The first phase of the new nursery construction, which includes the head house and greenhouse is expected to be completed early in 2023. A second phase, which is the outdoor growing grounds is set to be completed for opening in Summer 2023.

Thanks to generous funders the Garden is closing in on the \$8 million goal to complete the project. We invite your participation - sfbg.org/new-nursery. For questions, or to make a gift, please contact Director of Philanthropy Brooke Bedingfield at bbedingfield@sfbg.org or 415.661.1316 x312.





FLOWER PIANO

In the final days of summer and for the seventh time since 2015, Flower Piano once again transformed San Francisco Botanical Garden into the city's own alfresco concert hall where everyone was invited to play and listen.

"Flower Piano is located at that magical intersection of music and nature," said Dean Mermell, co-founder, together with Mauro ffortissimo, of event partner Sunset Piano. "It's a uniquely safe outdoor space where we can be our best as humans, enjoying the Bay Area's finest musicians in the city's most beautiful setting."

"We are excited to work with our partners at the Recreation and Park Department, Sunset Piano, and all the musicians and community organizations that bring Flower Piano to life and I am grateful to our sponsors and staff who make this special event happen," said Stephanie Linder, CEO of the Gardens of Golden Gate Park.

New this year was a very special opening event, *Fall and Fly*, on Wednesday September 14, where a groundbreaking commissioned work created for 12 grand pianos was performed on the Garden's Great Meadow. San Francisco-based composer Benjamin Gribble wrote *Fall and Fly*, an experimental work in three movements, that





explored the textures of a 12-piano choir. Stanford Symphony director Paul Phillips personally conducted this one-of-a-kind performance. Special guest speakers, writers, and poets contextualized the evening with themes of renewal and regrowth.

"Music in Golden Gate Park is a storied San Francisco tradition and Flower Piano has carved out its place as one of the most beautiful, creative and beloved events. The combination of music, nature and human connection is truly special, and I am so grateful we can provide it for our community," said Phil Ginsburg, General Manager, San Francisco Recreation and Park Department.



THANK YOU TO OUR SPONSORS

Delle Maxwell & Patrick Hanrahan
 The John and Marcia Goldman Foundation
 Silicon Valley Bank
 The Ronald Whittier Family Foundation
 Almonte Spa
 Outside Lands Works
 Sarah and Stuart Ryan
 Fiorella
 Duchess C.T. Cheryl Traverse
 O'Melveny
 Jennifer Rosdail Real Estate Team
 Ruth & Ken Wilcox
 Sue Ann Levin Schiff
 CarlsonBeck
 Seiler LLP Certified Public Accounting
 Pacific Catch
 Tiedemann Advisors
 Golden Gate Chiropractic
 Marie & Barry Lipman
 Karen & David Crommie
 Mr. Tipple's
 Steven Kelly
 Jane & Tom Singer
 KPMG
 Elman Family Foundation
 The San Francisco Garden Club
 FunCheap SF
 KQED
 San Francisco Chronicle
 San Francisco Magazine



VOLUNTEERS

BY THE NUMBERS

117 volunteers helped us maintain our 55 acre Garden as Green Team members and Gardener's Assistants, contributing **4,582** hours.

135 volunteers helped us bring Flower Piano to life, contributing **471** hours over our five day event.

82 volunteers contributed **1,198** hours to the Children's Garden helping with everything from garden maintenance to our Bean Sprout Family Days.

38 volunteers helped refresh the Celebration Garden in preparation for Garden Feast.

43 volunteers shared seasonal cheer during our annual wreathmaking event and contributed **94** hours.

43 volunteers continued our long tradition of selling plants by contributing **897** hours to the Plant Shop.

24 volunteers contributed an impressive **1,081** hours to support our Bookstore.

35 volunteers supported our library with programming and day-to-day support, contributing **668** hours.

Docents offered **270** tours this past year, contributing **452** volunteer hours.



Plant Shop volunteer Peggy Chu helps water plants for sale

TRANSITIONS

After seven wonderful years, Chloe Wieland, Director of Volunteer Engagement, decided to leave her role. Originally joining as a Children's Walk Guide, Chloe worked diligently to help grow and support our volunteer program into what it is today. We so appreciate the time and care she invested in our volunteer program and we're excited to see her in the Garden in the future.

We recently welcomed Crystal Lee Stone as the new Volunteer Program Manager this May. Crystal most recently worked as volunteer manager at KQED and prior to that managed volunteers at the Exploratorium. During the transition, Jenn Tapler, Program Manager, supported all facets of the program to continue to expand volunteer efforts. Thank you to Jenn for her commitment to our volunteer program and welcome, Crystal!



Program Manager Jenn Tapler, new Volunteer Program Manager Crystal Lee Stone, and former Director of Volunteer Engagement Chloe Wieland with baby Maya

Building on the return to the Garden in 2020, our volunteers continue to amplify the important work that we do throughout the Garden. While volunteers began to settle into new rhythms, we were able to convene in-person for large service activities and events again such as Flower Piano and Garden Feast.

Volunteers supported many facets of our organization and provided much needed support around the following:

WELCOME BACK, SERVICE GROUPS!

We were excited to welcome back volunteer service groups to the Garden! Group service opportunities are wonderful ways for organizations, community groups, and students to connect with one another while learning about our unique collections and getting their hands dirty – with gloves on of course. In addition to the tangible support they offer by helping us mulch and weed, we received \$7,500 in support for hosting these events.



A service group from Bumble spent a day together volunteering in the Garden

INTERESTED IN VOLUNTEERING?

Volunteer programs will continue to grow and evolve with the Gardens of Golden Gate Park. If you are interested in volunteering, please visit sfbg.org/volunteer to learn more and to complete our online application, or contact volunteer@sfbg.org.

YOUTH EDUCATION

In this second pandemic year, the Garden helped families and school children learn, play, and grow together outdoors, supporting the health and well-being of children and providing opportunities to learn about and connect with the natural world.

Bean Sprouts Family Days was the most attended program, inviting children of all ages to engage their senses in the Children's Garden with spaces and activities designed especially for them. Garden story times, special events with the Mexican Museum, and new areas like the Fort Forest and Creation Station provided a wealth of opportunities for children and their caregivers. School visits to the Garden rebounded, with over 5000 students coming for self-guided visits supported with multilingual online materials, while another 1750 students participated in staffed programs in the Children's Garden or were led by trained children's walk guides.

Garden Summer Camp provided rich experiences for participating children, with approximately a third supported through scholarship funds and a partnership with Summer Together, a city program serving families in need. A gift from the Maxwell-Hanrahan Foundation allowed us to inaugurate a new teen intern program this summer, building on our experience working with teens to create a carefully structured learning experience to develop leadership, horticulture, and life skills.

A partnership with the San Francisco Recreation and Parks Department brought almost 400 children from recreation centers in equity neighborhoods to visit the Garden for activities with staff, volunteers, and teen interns during the summer. As part of a full day introduction to Golden Gate Park, the Junior Guides explored the Garden and took home colorful activity booklets to encourage them to visit again with family and friends.

"It's his first time on a summer trip and riding a school bus. It's such a great experience and I hope there are more opportunities in the future!"

—Parent, Crocker Amazon Playground



GARDEN PEOPLE

New Zealand Prime Minister Jacinda Ardern and Governor Gavin Newsom establish a new international climate partnership in the Garden

On May 27, 2022, in the New Zealand Garden at the San Francisco Botanical Garden in Golden Gate Park, California and New Zealand outlined common objectives to achieve carbon-neutrality by mid-century, as well as their shared world-leading policies for zero-emission transportation, climate innovation, clean power generation, nature-based solutions, and zero waste initiatives.

Expanding California's global climate leadership, Governor Gavin Newsom established a new international climate partnership with New Zealand Prime Minister Jacinda Ardern. California and New Zealand signed a Memorandum of Cooperation to tackle the climate crisis, reduce pollution, and bolster the clean economy, while emphasizing community resilience and partnership with indigenous leaders.



San Francisco Recreation and Park Department General Manager Phil Ginsburg, California Governor Gavin Newsom, New Zealand Prime Minister Jacinda Ardern, Gardens of Golden Gate Park CEO Stephanie Linder, Recreation and Park Commission President Mark Buell, and Gardens of Golden Gate Park Board Chair Delle Maxwell gather under the New Zealand Christmas Tree (*Metrosideros excelsa*) in the Botanical Garden.

Garden Feast hosts special guest speaker Robin Wall Kimmerer and raises \$400,000 for Youth Education and Plant Collections

Thank you to everyone who helped make Garden Feast a fabulous success! Together we raised \$400,000 to support the Garden's youth education programs and extraordinary plant collections. It was wonderful to gather in the beautiful Celebration Garden, which hosted Garden Feast for the first time. Our special guest speaker Robin Wall Kimmerer, Celebrated author of *Braiding Sweetgrass: Indigenous Wisdom, Scientific Knowledge and the Teachings of Plants* and *Gathering Moss: A Natural and Cultural History of Mosses* inspired generosity, learning, and a shared love of plants. A special thank you goes out to our amazing Champion Sponsors Delle Maxwell and Pat Hanrahan and co-chairs Sarah Ryan and Saul Nadler, the whole event committee and all our generous sponsors. We are also grateful to the more than 60 volunteers who gave their valuable time to this event.



Gardens Board Member and event co-chair Sarah Ryan with Albert and Roxanne Richards



Special guest speaker Robin Wall Kimmerer and Gardens CEO Stephanie Linder



Susie Nadler, Jason Dewees, and Gardens Board Member and event co-chair Saul Nadler

SAN FRANCISCO BOTANICAL GARDEN SOCIETY FINANCIAL REPORT

STATEMENT OF FINANCIAL POSITION

As of June 30, 2021 and June 30, 2022

ASSETS	2022	2021
Cash and Investments	\$ 17,747,284	\$ 10,067,505
Accounts and Pledges Receivable	5,605,688	15,249,024
Property and Equipment	4,793,558	1,975,665
Other	110,802	138,871
Total Assets	\$ 28,257,332	\$ 27,431,065

LIABILITIES AND NET ASSETS	2022	2021
Current Liabilities	\$1,826,437	\$1,129,669
Noncurrent Liabilities	—	392,349
Net Assets	26,430,895	27,431,065
Total Liabilities and Net Assets	\$ 28,257,332	\$ 28,953,083

STATEMENT OF ACTIVITIES

As of June 30, 2021 and June 30, 2022

SUPPORT AND REVENUE	2022	2021
Contributed Income	\$ 5,303,483	\$ 22,832,984
Investment Income	(2,539,470)	82,648
Earned Income	943,538	858,594
Admissions Income*	1,152,666	998,718
Other	405,893	481,444
Total Support and Revenue	\$ 5,266,110	\$ 25,254,388

EXPENSES	2022	2021
Program Services	\$ 3,515,297	\$ 2,739,829
Fundraising and Development	519,579	436,204
Management and General	665,886	388,441
Total Expenses	\$ 4,700,762	\$ 3,564,474

Change in Net Assets **\$ 565,348** **\$ 21,689,914**

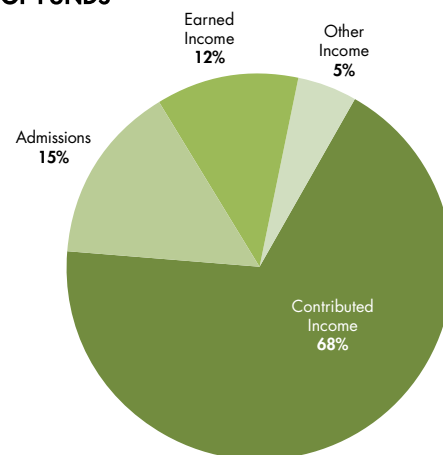
*As allocated to SFBGS by the San Francisco Recreation and Park Department

Source: San Francisco Botanical Garden Society Audited Financial Statements for the 12 months ended June 30, 2022.

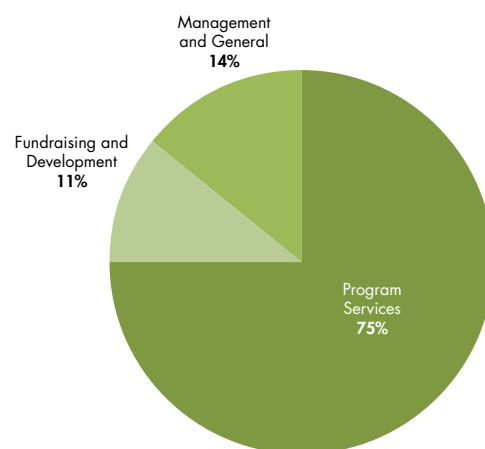
SOURCES AND USES OF FUNDS

12 months ended June 30, 2022

SOURCES OF FUNDS



USES OF FUNDS



Contributed Income: memberships, foundation grants, contributions, bequests, net revenues from fundraising events, and in-kind gifts

Earned Income: plant and bookstore sales, program fees, private rentals, and library art & book sales

Program Services: plant collections management, gardens, youth education, classes and public programs, library, bookstore, plant shop, volunteer program, visitor services, and other program-related activities



Guests enjoy the first Garden Feast ever in the Celebration Garden under an open-air tent. Photo courtesy Drew Altizer Photography.

THANK YOU TO OUR DONORS JULY 2021–JUNE 2022

The beauty and diversity of our collections and the array of programs, tours, and events at San Francisco Botanical Garden are made possible by you, our supporters. Each gift enables us to offer unparalleled opportunities for inspiration and learning. We would like to extend our gratitude to those who generously contributed to the Garden between July 1, 2021 and June 30, 2022. 🌿

\$100,000+

The Estate of Mary Eloise Halperin
Delle Maxwell & Patrick Hanrahan
Sanomar Barr Estate
Sustainable Futures Fund

Helen McKenna Ridley & Allan Ridley
Sarah & J. Stuart Ryan

\$10,000 to \$24,999

Almonte Spa
Don Baldocchi
Howard A. Berman
Karen Birks
Tish & James Brown
Frank A. Campini Foundation
Darcy Cohn & Spencer Seidman
Helen & Rajnikant Desai
The Friend Family Foundation
Daniel Ge
Anki & Larry Gelb
Norman Goldfarb
Dr. Roger & Mary Greenberg
Flora Grubb Gardens
Douglas & Debra Hutton
Kaiser Permanente
Eileen & Jude P. Laspa
Sara Malone
Nion McEvoy & Leslie Berriman
Stephen Pacheco
Will & Julie Parish
Lawrence Pitts
Bill & Joanne Prieur
San Francisco Professional
Gardeners' Association

Karen Sanford
Sue Ann Levin Schiff
Silicon Valley Bank
Barbara Stevens Estate
Sheila Stuart & Family
Blanche Thebom Trust
The Estate of Herbert Wetzel &
Dr. Cherie L.R. Wetzel
Dr. Joanne Whitney
The Ronald Whittier Family Foundation
Zellerbach Family Foundation

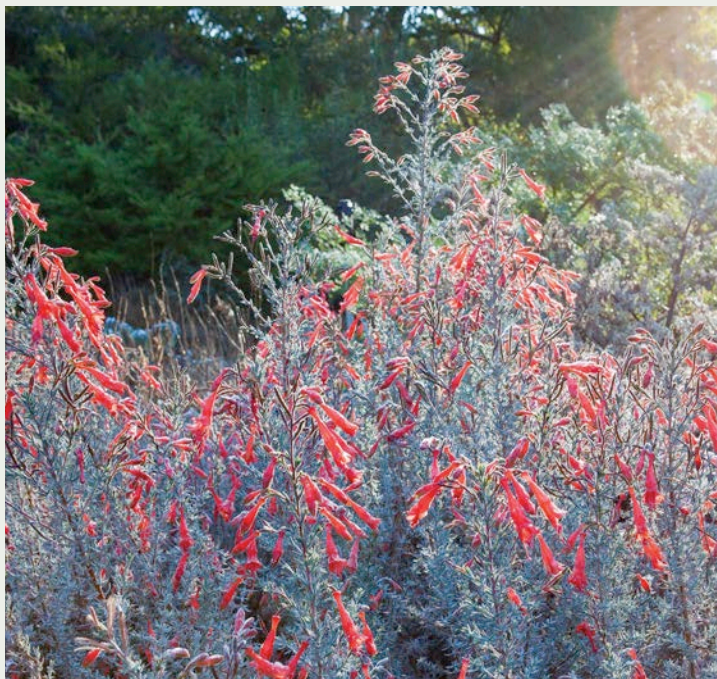
\$5,000 to \$9,999

Richard W. Achuck
Dr. Joseph & Mrs. Clara Barbaccia
Doug Berry
Anna C. Bolla
Jennifer & Henry Bowles
Bonnie Bridges & Bill Banyai
California Humanities
Jane Chin & James Wong
Catherine Cochrane
Edward & Nancy Conner
Bart & Ditty Deamer
Julie Dickerson
Vickie Feldstein & Dennis Orwig
Fiorella
Mary C. Fishman
Janie & Donny Friend
Dr. Thomas & Susan Gage
Pat & Marvin Gordon
James H. Greene, Jr.
John Harding & Alice Harding
Andrew & Valerie Hoft
Carol Izumi & Frank Wu
Anne & Jeff Katz
Stanley Langendorf Foundation
Fred Levin
Monica Martin
Dr. Linda S. Mitteness &
Dr. Judith C. Barker
Pisces Foundation
Margaret & Vic Quattrin
Jennifer Rosdail Real Estate Team
John Schilling
Michael & Alison Seaman
Gail Secchia
The Serwin Family
Sylvia Seufferlein
Tiedemann Advisors
Wendy Tonkin
Duchess CT-Cheryl Traverse-
Terry Turrentine
Bette Sue & Jack Wadsworth

Rita Comes Charitable Trust
Diane B. Wilsey
Susan Zetzer

\$2,500 to \$4,999

Abbot's Passage
Dr. Frank & Mary Beth Almeda
Paul B. Althouse
Irene Poon Andersen
Angela Applin
Julie Chase Baldocchi
Chase Baldocchi
Raquel Baldocchi
Janice & Matthew Barger
Heidi Baum
Paul & Sandra Bessières
Ben & Jocelyn Blumenrose
Arden Bucklin-Sporer & Dr. Karl Sporer
Alison Chaput
Caroline Colpitts
Greg Colvin & Donna Emerson
Joan L. Cooke & Robert Lafore
Carla & David Crane
Pamela Rummage Culp
Ms. Frances E. Dependahl
Tony Farrell & Kathy Heinze
Joyce Feeney
Elise & Tully Friedman
Lynn Fuller
Golden Gate Chiropractic Center
Robert Goodman & John Bankston
Mary Ellen Hannibal
Hartsough Family
MaryLou & Fred Heslet
Barbara & James Kautz
Michael Kim & Jenny Yip
The Kimball Foundation
KPMG LLP
Susana Lee
Annie Oliveto Miller
Dr. Nancy Milliken
Eva Monroe
Jeffrey Newman & Mary Montella
Saul & Susie Nadler
Ernest Ng
Emilie & Doug Ogden
O'Melveny & Myers LLP
The Bernard Osher Foundation
Mrs. Elizabeth Patterson
Anne & Craig Paxton
Wendy Pelton & Maryann Rainey
Robert Renner & Purobi Phillips
Jas Rundel
Seiler LLP
Jane & Tom Singer
Gina Solomon
The Stock Family
Claire Ucovich
Vanguard Charitable
Endowment Program
Diane & Bill Wara
David & Barbara Whitridge



Epilobium canum 'Hurricane Point'. Photo courtesy of Saxon Holt.

THANK YOU TO OUR DONORS JULY 2021–JUNE 2022

Mary Wikstrom
Nichoas A Woodworth
Family & Friends of Owen Evan Delay
Harold L. Wyman Foundation

\$1,000 to \$2,499

Andrew R Aldrich
Another Planet Entertainment
Gwynn & Mitch August
Azus Foundation
Joel & Teresa Backman
Derek & Rachel Benham
Stuart Berkowitz
Joan Bodenlos
Kathleen Bole & Paul Klingenstein
Peter Bradley & David Krimm
Lisa Bransten & John Rumsey
Faith A. & Stephen Brown
Robert & Carolyn Bunje
Brian & April Cano
David & Emily Casnocha
Baylor Chapman
Jan Chong
Marcia Chun
Courtney Clarkson & Roy Leggitt
Deborah Coleman & Steve Prittie
Patrick Collins
Donna Colson
Coleen & Jack Coolidge
John C Copoulos
Charles Crocker
Timothy Dattels & Kristine Johnson
David Deiwert & Alan Farr
Mark Delventhal
Bonnie Eva Demergasso
Ray & Dagmar Dolby Fund
Yvonne Don & Rich Shrieve
Karen & Chris Duderstadt
The Dejong & Erdos Fund
Jean & Joshua M. Ets-Hokin
Fidelity Brokerage Services
Kay Fike
First Republic Bank
Randi & Bob Fisher
Lucy Fisher
Thomas & Marty Funkhouser
Barry & Laura Galvin
Joan & Launce E. Gamble
Launce & Bella Gamble
Meredith Goldsmith
Goodscapes
Mary & Steven Gorski
Rosemary Green
Sophia Green & John Link
Zane Gresham & Carole Robinson
Anita Hansen & Robert Mittelstaedt
Kimberley Harmon
Heimbinder Family Foundation
Terrie Campbell & James Henderson
Deanna Herrera
Kay Hitch
Mary & Saxon Holt
Drs. Mary Hufty & Daniel Alegria
Susan Hunter & Brian Morrisroe

Gayle Ing
Paul & Elizabeth Ireland
Barbara J. R. Jones
Cristina & Jason Jones
Jacqueline Kanya Matzen
Ron & Cheryl Karpowicz
Ron & Barbara Kaufman
Brandon Keefe
Mary Ellen & Hovey Kemp
Eliot Kent-Uritam & Gillian Ashenfelter
Martha & Michael Kessler
Jim & Dana Ketcham
David King & George Palis
John Kirkpatrick
Tania & Casey Koon
Barbara Kosnar
Joan Kugler & Paul McCauley
Mary R Lee
Lily Bowles Leo
Stephanie Linder & Eamon O'Byrne
Marie & Barry Lipman
Cynthia Snorf Livermore
Danielle Maestretti
Kathy Malaney
Beverly & Thomas A. Marlow II
Carla McKay & Martha Ehrenfeld
The Ross McKee Foundation
Michael McKenna & Baubie Fox
Carolyn & Alexander R. Mehran
Emy Merritt
Lisa Miao & Kairen Wong
Christopher Minnes
Mia Monroe & Stephan Meyer
Julie Morgan
Patsy & Ricardo Muñoz
Clare M. Murphy
Claire Myers
Stacy Nelson
Tze Chang Ng & Huilan Wong
Daniel Nolan Design
Diane Parish & Paul Gelburd
Chris & Patty Peper
Regina Phelps & Dave Kieffer
Wendy Poinot
Claudine Radford
Kathy & Corey Raffel
Kamini Ramani
Rock & Rose Landscapes
Shelagh Rohlen
Joseph Rothleutner & Jim Salyards
Douglas Brent Rowden
Allison Rowe
Ajay, Anu, Arya, Pranav Sajjala
Pat Scatena
Karen Schaffer & Michael Ward
Robert Schiff & Harper Matheson
Joseph Sciortino
Pamela B Scott
Selamat Designs
SFJAZZ
Douglas R. Shaffer & Walter Rask
Shanette Kay Photography
Natalie Shuttleworth
Betty Smith & Kent McDonald
Elise Sommerville

John M Stedman
Tania W. Stepanian
Rick & Marcy Swain
Sandra Swanson
Sarah Swinerton
Jennifer Taylor & Jacob Zigelman
Stuart Toy
Ariane Trelaun & Joe Amon
Fei Tsen & Wayne Lew
Charles M. Vadalabene
Varnhagen Family Trust
Rajiv Vijayakumar & Lucinda Love
Leslie Walker
Catherine Watters & students
Daniel Whan & Priscila Choi
James P. Whitlock, Jr.
Patricia Wipf
Rex Wolf
Rosemary & Sheldon Wong
Woodside Atherton Garden Club
Richard & Patricia Yerian
Stephanie Zheng
Phil & Julie Zigoris
Zoe Astrachan & Andrew Dunbar,
Interstice Architects

\$550 to \$999

Johnny Asbury & Rebecca Sudore
Diane Balter & Michael McMillan
Jenna Bayer
James Bays
Lawrence Bazel & Diane Gibson
Thom Berninzoni & Antonio Cristillo
Richard Binkoff
Aaron Binns
Jamie & Philip Bowles
Coco & Chippo Chang
Crawford Cooley
Ellen Copeland
Crane Curran
Sisi Damner
Ana Angel Delgado
Maria Dichov
Alexander Dodd & Roberta Mc Gowan
Tara Donohue
Duckhorn Vineyards
Gina Falsetto & Warren Brown
Susan & George Fesus
Sara Flynn
Bina Galal & Nirav Bhakta
Peter Good & Sara Bartholomew
Maggie Gosselin & Ben Sigelman
Annie Guo
Vanessa Handley
Heidi Hansen & Richard Watkins
Maggie Salenger Haywood
David Hettick
Jack V. Hoffman
Natasha Hopkinson
Hotel 1
Hotel Zephyr
Hugh Groman Group
Hyde Vineyards Estate
Anne Johnson & Peter Fish

Just Give
Yoon Hui Kim
Callie Kindrich
Linda Lavelle
David & Diane Luders
Ann Ludwig
Kelly & Jay Markello
Sally Maske & Chris Radich
Sarah Maxwell & Brian Kreischer
Kathleen & Justin McCarthy
Rick & Beverly McKee
"The Purple Lady Fund"
Barbara Meislin & Stuart Kaplan
Pragya Mishra
Siddhartha Mitra
Laura Murphy & Daniel Freeman
Laurel Myers
Edmund W. Ow
Justin Palpant
Lana Pappas
Rekha Patel
Laurie Poston & Brian Ferrall
Merylyn Presten
McKenna Quint
Suzanne J Radcliffe
Janet Richardson
Bob & Bobbie Ritchie
Ed & Dawn Roth
Judy Scotchmoor & Roland Gangloff
Jane Scurich
Beethi & Saibal Sen
Kimberlee Sorem
The Stavrand
Beth Ann Steinberg
Elaine Stutt
Susan & Mark Stutzman
Patrice Sutton
Gary Tsang
Anthony Tse
Richard Turner
Jillian & Blake Tyrrell
Betty Packard Voris
Amanda Weitman & Chris Heffelfinger
Clare Wheeler
Andrew & Billie Wiesenthal
Ruth Wolfe
Cynthia W Woods
Jane & Charles Zaloudek

\$250 to \$549

Keren & Bob Abra
Steven Alyari
Cheri Anderson
Masha & Nick Aries
Asian Art Museum of San Francisco
Ruth Elin Auerbach
Dana Aguerro
Joel & Teresa Backman
Celia Barbaccia
Tess Barbieri
Gregory Barger & Pamela Conrad
Peter Barschall & Sarah Cohen
Karen Bartholomew
Carole Bayer

THANK YOU TO OUR DONORS JULY 2021–JUNE 2022

Leslie & Shobhana Beaudin	Diane & David Goldsmith	Myron & Zoe Levin	Sally & Toby Rosenblatt
Daniel Belik & Akemi Fujimoto	Clare L. Gordon	Susan Little	Robert & Carol Russo
Samantha Bennett	Michele Goss	Patricia Litton & Peter Ralston	Juliette, Nicole & Patrick Ryan
Robert Bertram & Thomas Tesoriero	Linda Joy Graham	Audrey Llewelyn	Kathleen L. Rydar
David Blazeovich	The Greenberg Foundation	Steve Lloyd & Melanie Mikecz	Susan Salenger
Kevin & Maria Boden	Adam Greenspan & Akiko Ono	Lodge at the Presidio	Jim Salyards
Kathleen Bodnar	Janis Greenspan	Eileen Louie	San Francisco Orchid Society
Michael & Nancy Borah	Mrs. Richard M. Griffith	Shirley Lowe	San Francisco Symphony
Charles Borg	Hui Guo	Iman Maghroori	Theodore Scalione Jr
Dan Bornstein & Kristin Murtagh	H2Hotel	Wendy Mann	Anne Scherer
Pete Brannigan & Sharon McKenney	Sarah Hammond & Tim Carlstedt	Anthony & Maria Gloria Rando	Ted Schettler
Anne Brewer	Lisa Harris	Michael May	Suzanne & Will Schutte
Lisa Brown & Daniel Handler	Jeri & Van Hart, Jr.	Frederick & Beverly Maytag	Douglas Scribner
Mollie Brown & Warren Browner	Rose Hauer	Jason McElroy	Pamela Sebastian
Robert Bunker & Sandra Treacy	Hayes Street Grill	Delia McGrath	Dr. Joanne Seltzer
Betsy Burdick	Andy & Ashley Hecht	Michael McKechnie & Jaime Reyes	Charles & Claudia Slayman
California Academy of Sciences	Sara Hirsch & Jay Stevens	Karen Johnson-McKewan &	Andrea Segura Smith & Randy Smith
California Cotton Alliance	Lora Hirschberg & Laura Norrell	Thomas R. McKewan	William & Jennifer Sousae
Call of the Sea	Aaron Horowitz	Kathleen M McNulty	Charles Stanberry
Ted Camesano & Joseph Lam	Tina Humphrey	Henry Medeiros & Lesa Carol Medeiros	Donald Stang & Helen Wickes
Sally A. Carlson	Jocelyn S. Hunter	Stephanie Mellin	Robert Steidl
James Carmack	Thomas Hurley & Loren Chu	Menendez Family	Rodney Stevenson
Paulo Castello da Costa	Lourdes & Horace Hurst	Stephanie Metz	Patricia & James Stocker
Anne C. Cawood	James & Deborah Iacoponi	Karen Miller	Alden Stoner
Brian Cennamo	Diane Jacobson	Karen Hildreth & Michael Miller	Peter S. Straub
Sharon & Richard Chackerian	Donald & Helen Jaffe	Sayre Miller	Douglas P. Stuart
Mona Chang & Phil Strazzula	A Roger Jeanson	Sarah & Gaurav Misra	Karlyn Sugai
Chao Family	Philip M. & Patricia D. Jelly	Clark Mitchell & Ron Roudebush	Gary Sullivan & Tim Lynn
Joan Chaplick	Herbert L. Jeong	Eugene & Bonnie Moffett	Albert Susor
Eunice Chee	Richard Johns	Scott Montgomery & Marc Rand	Luke & Elizabeth Swartz
Emily Chong	Gautam Kachroo	Nina Moore	TDW LLC
Michael Clark	Mr. & Mrs. David & Linda Kapnick	Lainie Motamedi & Aaron Johnson	William Tetreault
Bridget Patricia Clinton	Avinash Kar	Marguerite Murphy	William & Leslie Thompson
Kelly Close	Dr. Surabhi Karambelkar &	Mr. & Mrs. James Naughton	Christian & Melissa Topham
Scott & Peggy Cmiel	Dr. Andrew Leach	Elizabeth A. Navas	Barbara Traisman
Dr. Suzanne Coberly & Jeff Haas	Susan Kase	John R. Nelson	Sara Undurraga
Joseph James Collins	James & Ann Kauffman	Mary & Alex Nemerov	Alexander Vaisman
Paul & Carla Cooper	Bruce Keene	Kathi, Barkley, & Sherley Nickel	Belinda C. Vega
Julia Cosgrove	Judy Kelly	Nickel Family LLC	Jared Vermeil & Ragnar von Schiber
Trey Costerisan	Janice Kendall & D. Wesley Wiley	Michael Niczyporuk & Rachel Forisha	Vichy Springs Resort & Spa
William Coughran Jr	Eileen Keremitsis	Jenny O'Brien	Alexander von Hafften
Eliot Davidoff	Doris Ketcham	Susan B. Olness	Rube Warren
Patricia Deering & Christine Colloins	Christine B. Kibre	Omakase Restaurant Group	Water Asset Management LLC
Elizabeth d'Hemery	Michelle Kilkenny	Dr. & Mrs. Mark Oscherwitz	Keith Weed & Julia Molander
Curtis E. Dennison & Julio Garay	Kate & Hyo J. Kim	Gerald O'Sullivan	Marianne Welmers
Mr. M. Jason Dewees	Rene Kim	Madan Paidhungat	Daniel Sullivan
Mary Ann & Richard Draeger	David & Niloufer King	Su-Moon Paik & Bob Brown	Mrs. Liza White
Daniel Duffy	Jacqueline & Eric Kisslinger	Nancy J. Painter	Cack & Doug Wilhelm
Judith Dunworth	Edward & Debra Knych	Jenni Parrish & Gerald Clark	Anne & Kirke Wilson
Jessica Eng	Paula & Lief Koepsel	Catherine & John Patterson	Anita Wing
Jannette Engel & Donald Oaks	Susan S. Krebs	Richard Payan	Anne Wintroub
Jacqueline & Christian P. Erdman	Char Kuperstein	Melanie Pena	Janelle Wong & James Smith
Julia Erickson	Alexandra Kutik	Mauree Jane Perry	Kit Woo & Keen Woo
Gretchen Evans	Willie Kwan	Nicki Peterson	Alexis Woods & Daniel Donahoe
John Feeney	Millicent Lalanne	Nicola Peterson	Bo Yang
Mrs. Carolyn Zecca Ferris	Stephen & Vanessa Lambright	Bonnie Preston & Bruce Conklin	Barbara Zhang
Annette Fineberg & Sufen Chiu	Charles Laurensen	Public Glass Works	Michael Zigelman & Maurina Kusell
Flour + Water	Patricia Lawton	Melinda Ramm	Matthew & JoAnn Zlatunich
Gail & Robert Ford	Le Meridien San Francisco	Carol Dependahl Ripperda &	Jane & Mark Zuercher
Margaret Gabriel	Min Ju Lee	Jerry Ripperda	
Ellen Garber & Glenn Hunt	Sam Leftwich	Diana & James Rogers	
Michele Garside	Suzanne Legallet	Patricia Rogers	
Mary & Theodore Georgis	Adrienne Leifer	ROOH San Francisco	
Nina & John Gladish	Susan Leupold	David Rorick	
Jerry & Alicia Goehring	Roz Levaco	Susan & Steven Rosen	

Donor list includes in-kind gifts. If we have made an error or omission, please accept our apologies. Please contact the Philanthropy Office at (415) 661-4316 ext. 305, so that we may correct our records.

TRIBUTE LISTINGS

IN HONOR OF

The Baldocchi Family

Nancy Fee

Dr. Joseph Barbaccia

Celia Barbaccia

Chris Barry

Danielle Maestretti

Tish Brown

Jamie & Philip Bowles

David Ciatto

Jessica Parcels

Lauren Von Dehsen

Donna Von Dehsen

Fran Dependahl

Carol Dependahl Ripperda & Jerry Ripperda

Jan & David Hartsough

Hartsough Family

Carol Izumi

Robert & Carol Russo

Ron Karpowicz

Joan Jacobus

Jackson Luu

Suzan Guayasamin

Delle Maxwell

Drs. Mary Hufty & Daniel Alegria

Mary Montella

Jeffrey Newman & Mary Montella

Margo Oliveto

Annie Oliveto Miller

Joanne Olivieri

Elise Stupi

Anne & Craig Paxton

Margaret Gabriel

Forrest L. Harding & Cecile Pendleton

John Harding & Alice Harding

Jennifer & Alan Petersen

Megan Ashton

Stella Sebastiani

Julie Morgan

Anne Simon

Betsy Sason

Angela Snead

Maris Meyerson

Gina Solomon

Ted Schettler

Pat Stocker

Emma Stocker

Regina Telech, RN

Rachel Schmidt

Elizabeth Ann Wilson

Anonymous

Susan Zetzer

Sydney Weiner

IN MEMORY OF

Maria Acdan

Barbara Levinson

Harith At-Chan

Kanikah LeMon

John Berry Benson

Breanna Kaitfors

Gail A Berman

Howard A. Berman

Ben Borenstein & Sheldon Strauss

Ruth Borenstein & Karen Strauss

Beatrice Bowles

California Cotton Alliance

Caroline Berry

Dian Blomquist

Dominic & Sally Carlucci

Elaine Chiu

Elizabeth d' Hemery

Ray & Dagmar Dolby Fund

Carolyn Zecca Ferris

Randi & Bob Fisher

Virginia & John Gable

Joan & Launce E. Gamble

Launce & Bella Gamble

Mary & Theodore Georgis

Nina & John Gladish

Sara Griffith

Corazon Hamaguchi

Jason McElroy

Cannon Michael

Sayre Miller

Stephanie Milligan

Kate Morrissey & Sarah Harrington

Nickel Family LLC

Kathi, Barkley, & Sherley Nickel

Will & Julie Parish

Cynthia Poett

Jonathan Reiter

Ramada Salieri

Sue Ann Levin Schiff

Tania W. Stepanian

Christian & Melissa Topham

Richard Turner

Leslie Walker

Water Asset Management LLC

David & Barbara Whitridge

Julie Brook

Anonymous

Sara Pinkert

John M Stedman

Ryan Baxter Cochrane

Catherine Cochrane

Anne Cohen

Linda Snyder

Tara Condell

Tenny Lee

Owen Evan Delay

Kim Workman

Brutawit Fekadesilassie

Lauren Rudman & Melissa S. Van Duzer

Bruno Fernandes

Robert Renner & Purobi Phillips

Tanya L. Fimby

Tilly Roche Clark

Linda Cass Gilbert

Liza White

Sadie Hutton

Douglas & Debra Hutton

Sue Kirkham

James Bays

Murni Knoepfel

Walter Knoepfel

Christina Lee

Susana Lee

Jean Lee

San Francisco Orchid Society

Nancy Livingston Levin

Fred Levin

Marie Mercedes Luna

Elise Sommerville

Marcia Mein

Robin Marich

Helen & Thomas Merigan

Helen McKenna Ridley

Hung Sin Ng

Deanna Herrera

Carolyn Nuite

Valerie K. Orlando

Beatrice & Arthur Pacheco

Stephen Pacheco

Carol Patchan

Anonymous

Raymundo Perez

Angela Applin

Mary Pitts

Caren Meghreblian & Harry Bernstein

Leo Pribble

Trey Costerisan

Thomas Rohlfen

Ruth Cox

Laurence Hills

Fifi Holbrook

Mimi Kearns

Andrea LoPinto

Nailey Meyer

Willa Mundell

Susan Olness

Susan Pelosi

Lang Anh Pham

Dayna Ramlan

Jan Reddick

Catherine Watters

Rosine "Nana" Ryan

Juliette, Nicole & Patrick Ryan

Caesar Sajjala

Arya, Ajay, Anu & Pranav Sajjala

Helen L. Scollnik

Andrew & Valerie Hoft

Barbara Stevens

Daisy Mah

Mel Family

The Greenberg Foundation

Helen McKenna Ridley & Allan Ridley

Richard Turner

John Stuart

Dugan & Philippe Lamoise

Joanne Taylor

Diane Balter & Michael McMillan

Dr. & Mrs. Joseph C. Barbaccia

Karen Birks

Anna C. Bolla

Donna Culpepper

Eastern Funding

Judianne Eynon

Barbara & Eugene Gregor

Dennis Gutman

Jerrold & Anne Jayne

Betsy Johnsen & Perry Silver

Brandy Kubl

Dottie Lovett

Richard & Molley Lowry

Karen Lundin

Monica Martin

Maggie McDowell

Nina & Steve Moore

Ernest Ng

Lisa & Clifford Roberts

Stefanie & Everett Rosemond

Sarah Ryan

Tory Stewart

Rose & Tim Stewart

Dr. Joanne Whitney

Ruth & Ken Wilcox

Mary Ann Tonkin

Linda Faber & Family

Rosemarie Ullman

Peter Stein

Bernard Veuthey

Judy Leitner

Eleanor Visser

Deirdre Visser

Apple Walker

Perry & Charles Freeman

Ernest Wertheim, Landscape Architect

Tom & Jacquie Courtright

Cherie Wetzel

Richard W. Achuck

William Whitehead

Bradley Whitehead

Kim Lan Woo

Jeffrey Komala

Winston & Judee Lee

Qian Dong Li

Gail Masri

UCSF IT

Erik Wieland



LEGACY CIRCLE

A GIFT FOR THE GARDEN'S FUTURE

San Francisco Botanical Garden recognizes the many supporters who have advised us their estate plan includes a provision for the Garden.

We are deeply grateful to these generous individuals and families.

Dr. Frank and Mary Beth Almeda	Sara & Ronald Malone
Mr. Paul B. Althouse	Maria Mangold &
Ruth Ann Armstrong	Stephen Hunter
Drs. Diana Silver Arsham and	Monica Martin &
Gary Arsham	Buck Delventhal
Barbara Austin	John B. McCallister
Tess Barbieri	Dr. Linda Mitteness and
Les Bowman and David Merrill	Dr. Judith Barker
Peter Bradley and David Krimm	Michael & Eva Monroe
Dennis Burke	Ned Moran and Kevin Rillera
Zachary & Patricia Coney	Carol Mowbray
Joan Cooke and Robert Lafore	Elin Ouye and Dennis Sherman
Larry Dahm	Dr. Lawrence & Mary Pitts
Bart and Ditty Deamer	Burr Preston
Helen and Rajnikant Desai	William and Joanne Prieur
Maria E. Dichov	Kathy and Corey Raffel
Irene Balcar Dillon and	Douglas R. Shaffer and
William Dillon	Walter Rask
Sheila Stuart and Lauren Downs	Douglas Rowden
Philip and Marina Early	Nancy Russell in memory of
Veronica Espada	Beverly Russell
Judianne Eynon	Geoffrey W. Scammell
Mary C. Fishman	Naomi Shibata
Dionne Fountain	Natalie O. Shuttleworth
Renata Gasperi	John Stedman
Tom Gee	Gary Weiss and Charles Stinson
Ulf and Beatrice Gustafsson	Jeremy Taylor
Thomas Hann	Joanne A. Taylor
Sidney Hollister	Charles Vadalabene
Marsha Irwin and	Henry & Gloria Wachs Trust
Richard Pesqueira	Elizabeth Waterman
Mary Anne Kayiatos	Ruth and Kenneth Wilcox
Carrie Macdonald	Rosemary and Sheldon Wong

For information on the benefits of making an estate gift and to join the Legacy Circle, please visit: sfbg.planmygift.org or call 415-661-1316 ext. 305.





San Francisco Botanical Garden
1199 9th Avenue at Lincoln Way
San Francisco, CA 94122

RETURN SERVICE REQUESTED

Nonprofit
Organization
US Postage
PAID
Permit 11318
San Francisco, CA

Visitors gather to hear Awesome Orchestra at the Fountain Plaza during this year's Flower Piano.

