

2023 ANNUAL REPORT



By the Numbers

July 1, 2022 – June 30, 2023

1,205,746

visits to the Gardens, 43% of which were free of charge

18,856

plants sold to the community — a 158% increase



11,992

Accessions in the living collection

7,625

unique plants, 12% of which are of wild collected origin

13,286

hours contributed by volunteers to virtually every aspect of the Gardens' operations — a 25% increase year over year

687

volunteers participated individually or in corporate, school, and service organization projects — 67% more than last year



\$7.8m

total admissions revenue from nonresident ticket sales

52,845

Gardens of Golden Gate Park Passes sold for visitors to enjoy all the Gardens for three days

7,914

member households — a 23% increase year over year



28,546

children served through experiential programs — more than double from year prior

132,001

individuals served through public programs beyond our youth education



Dear Garden Supporters,

Reflecting on the past year – our first year as the Gardens of Golden Gate Park – we are proud of what we accomplished together and excited about the future. Both locals and visitors to the Bay Area have embraced an expansive vision that brings together the Conservatory of Flowers, Japanese Tea Garden, and San Francisco Botanical Garden into one public/private partnership. With more than 1.2 million visitors, we're now one of the most well-attended public gardens in the country.

More people are becoming members of the Gardens, taking advantage of the perks of admission and guest access to all three Gardens, including for the first time, membership at the Japanese Tea Garden. Visitors can now purchase the new Gardens of Golden Gate Park pass and experience the wonders of the Gardens over three days. More children and youth are engaging with our education programs than ever before. And it was a thrill to witness a record breaking 66,000 people attend our 8th annual Flower Piano. We heard from so many of you that our interactive music festival ranks as one of your favorite events of the year.

Over the year, the Gardens have had ongoing projects, including planting enhancements throughout the Botanical Garden, a new entry to the Celebration Garden, plaza construction at the Japanese Tea Garden, and glazing work in the Conservatory of Flowers. The largest project, the new nursery at the Botanical Garden has wrapped up construction with future outdoor growing grounds to come.

Our Board of Directors and the San Francisco Recreation & Park Commission approved an ambitious comprehensive joint strategic plan for the Gardens. Implementing this plan over five years will:

- Enhance visitor experience through engaging educational resources and programming,
- Develop new plant collections, restore historic structures, and address deferred maintenance,
- Open our new nursery and grow plants for sale, for the collections, and for conservation,
- Engage diverse populations of all ages and backgrounds, and
- Improve and grow our membership program.

At the inaugural Gala for the Gardens, we honored outgoing Board Chair Delle Maxwell for her extraordinary leadership, volunteer service, and generosity. It was also a celebration of our Director of Education, Annette Huddle's 25th anniversary of dedication to youth programming at the Gardens. Local historian and author Gary Kamiya shared his moving personal reflections on the Gardens.

Additional recent accomplishments include a new website as part of the roll out of our new brand and the completion of an interpretive plan for the Gardens.

Thank you for helping to make all this possible.

With gratitude,

Stephanie Linder
CHIEF EXECUTIVE OFFICER

Joseph Rothleutner
GARDEN DIRECTOR

Board of Directors

SARAH RYAN, BOARD CHAIR
CAROL IZUMI, VICE CHAIR
JENNIFER PETERSEN, TREASURER
LISA SERWIN, SECRETARY
DELLE MAXWELL, IMMEDIATE PAST BOARD CHAIR
DON BALDOCCHI
DR. JOSEPH C. BARBACCIA
TISH BROWN
JANE CHIN
LUCY FISHER, PHD
ADAM GREENSPAN
ZANE GRESHAM
DR. VANESSA HANDLEY
MARY ELLEN HANNIBAL
SUSAN HUNTER
CRISTINA JONES
CLAIRE MYERS
SAUL NADLER
JOSEPH ROTHLEUTNER
V. FEI TSEN
DR. JOANNE WHITNEY
RUTH WILCOX
SUSAN ZETZER
STEPHANIE LINDER, CEO

Staff Leadership

STEPHANIE LINDER, CEO
JOSEPH ROTHLEUTNER, GARDEN DIRECTOR
AHMAD ANDERSON, DIRECTOR OF PEOPLE & CULTURE
WENDY BEAR, DIRECTOR OF FINANCE
JAMIE CHAN ED.D., DIRECTOR OF PROGRAMS & PARTNERSHIPS
VANESSA FAJARDO, DIRECTOR OF OPERATIONS & ADMINISTRATION
RYAN GUILLOU, DIRECTOR OF COLLECTIONS & CONSERVATION
ANNETTE HUDDLE, DIRECTOR OF EDUCATION
BRENDAN LANGE, DIRECTOR OF ADVANCEMENT
NICOLETTE TELECH, CHIEF OF STAFF

SF Recreation & Parks

KAT ANDERSON, PRESIDENT
JOE HALLISY, VICE PRESIDENT
PHIL GINSBURG, GENERAL MANAGER
ERIC ANDERSEN, DIRECTOR OF OPERATIONS
JOSEPH ROTHLEUTNER, GARDEN DIRECTOR





Leadership Transition

Gardens of Golden Gate Park is excited to welcome Sarah Ryan as the new board chair. Sarah was unanimously elected chair of the board in July, 2023. After beginning her involvement with the Gardens as a volunteer docent at the Botanical Garden, Sarah decided she wanted to devote more time to these special places by joining the Board of Directors. Prior to becoming board chair, Sarah was chair of the Gardens' philanthropy committee, co-chair of the nursery capital campaign committee, was a 3-year co-chair of the Garden Feast annual fundraiser, and has supported Flower Piano as an annual sponsor and volunteer. Sarah looks forward to engaging the full board of directors in the exciting work of moving the Gardens toward our strategic goals and toward becoming a top botanical garden destination in the country. We celebrate Sarah's past and future dedication to the Gardens, and thank her for her leadership.

MEET SARAH RYAN

Sarah Ryan graduated from Scripps College with a B.A. in Literature. Following graduation, she worked with Lotus Development Corporation in Boston and with a small lobbying and communications firm in Washington, D.C. Since then, Sarah has spent her time in Singapore and Marin County, CA, where she's raised three children, and served as a community volunteer and advocate. For 8 years (two as Board Chair), she served on the Board of Directors of Adopt-A-Family of Marin, a homelessness prevention agency. Sarah was an active member of the National Charity League for 11 years, and served as Chapter President. Sarah has been a Trustee of the Belvedere Community Foundation, is a member of the Marin Garden Club, and is a member of the Ross Auxiliary of the Fine Arts Museums of San Francisco.

HONORING DELLE MAXWELL

Sarah Ryan succeeds immediate past board chair Delle Maxwell. The Gardens were delighted to celebrate Delle's incredible contributions and dedication at the Gala for the Gardens fundraiser in spring, 2023. Delle Maxwell, a philanthropist and retired award-winning computer animator, began volunteering with the Gardens more than 20 years ago. As board chair, she aided the completion of the new plant nursery as the lead donor and made a truly transformational \$20 million dollar Maxwell/Hanrahan Endowed Fund for the Gardens. Together with her husband, Pat Hanrahan, a computer science pioneer and recent A.M. Turing Award recipient, Delle co-founded the Maxwell/Hanrahan Foundation. We thank Delle for her amazing leadership as past board chair.





Youth in the Garden

The Gardens continue to be a place for youth to grow and flourish, with a variety of programs and activities providing opportunities for ongoing engagement and connection. The high school intern program, supported by seed funding from the Maxwell/Hanrahan Foundation, has proven to be a real winner, with teens gaining leadership, teamwork, and horticulture skills as they help make a range of programs happen.

In its second year, the intern program expanded significantly, hiring eight teens for the summer as well as providing placements for another eight participating in the Mayor's Youth Employment and Education Program and SF STEM Academy. The teens pruned, planted, and mulched in the Children's Garden, enjoyed a tour and activities at the California Academy of Sciences Herbarium, and explored career options through conversations with a variety of Gardens and Rec & Park staff. A Conservatory visit focused on brainstorming future intern opportunities on site.

The bulk of the interns' time went to program support. The Junior Rangers program, a partnership with Rec & Park which brought over 325 children from



equity neighborhoods to Golden Gate Park, engaged the teens by leading sketching activities in the Japanese Tea Garden, exploring the Botanical Garden with students, and conducting hands-on activities in the Children's Garden. Interns also supported Bean Sprouts Family Days, Summer Sprouts for community groups, and Garden Camp, serving more than 2,700 children through the summer.

Two recent graduates of the high school intern program took next career steps at the Gardens this summer. Josh Michals was hired as a Garden Camp counselor, sharing his enthusiasm with our campers, while Marco Iboshi interned with the Collections & Conservation Department, applying and developing his botany knowledge.

"This summer I hoped to work in the Garden and on different activities with children, but I was surprised to gain such a valuable amount of knowledge regarding career paths and working in teams. The amount of leadership skills I have built in these past weeks far exceeded my expectations." — KAIDEN NGUYEN, 2023 INTERN





Plant Collections

SCARLET BLOOMS AT THE CONSERVATORY

With a live cam set up to capture every moment of growth, the Gardens staff and visitors eagerly awaited news that Scarlet's performance was about to debut. Scarlet is one of five blooming sized and individually named corpse flowers at the Conservatory of Flowers, and it is a momentous occasion when one of them is about to bloom.

Amorphophallus titanum, more commonly known as a corpse flower, only puts on this display once every three to five years for just 48 hours. Though they put on quite a visual show, the corpse flower is most known for its odor. Corpse flowers produce the world's largest inflorescence (a structure comprised of many flowers and parts), and they emit a smell similar to rotting flesh to attract their primary pollinators — carrion flies



and beetles. Native to rainforests on the island of Sumatra, this charismatic species is endangered in the wild, making an opportunity to experience it in-person all the more special.

Like carrion flies, visitors couldn't resist the opportunity to take in Scarlet's foul aroma. Starting in the evening when the bloom began to open, the Conservatory of Flowers welcomed over 4,000 people during the 48-hour event. Once the long line of eager enthusiasts made it inside the West Gallery where Scarlet was on display, they were enthralled. An interpretation station, full of dried flower parts and educational materials, was a highlight for visitors wanting to learn more. Visitors were ecstatic to share the space with the putrid smell, making this a powerful (if unlikely) mission moment connecting people to plants, the planet, and each other.

DOCUMENTING THE LIVING COLLECTIONS

Though it may not be the main draw for the millions of visitors who flock to botanical gardens every year, a document of the living plant collections is a crucial part of what defines being a botanical garden. Such documentation plays a crucial role in understanding what plants each garden has, how these beautiful spaces are managed, and how these plants are cared for and shared.

The San Francisco Botanical Garden has a robust history of documenting its living collection by mapping the plants' locations



and storing that information in a specialty database. Most of this work has been supported by grants from the Stanley Smith Horticultural Trust and the Institute of Museum and Library Services (IMLS), allowing for investments in software, equipment, and staff.

With the formation of the Gardens of Golden Gate Park, the plants at three individual sites will be managed as one collection. This will require expanding the current IrisBG database and mapping operation and a larger team to oversee this work. The Collections & Conservation Team is proud to announce its award of a \$243,000 grant by IMLS to support the

expansion of this important work over the next three years. This grant allows us to launch new initiatives, including 3D mapping the Conservatory of Flowers (and archiving historic analog records), and recording historic features in the Japanese Tea Garden.



CHERRY BLOSSOMS IN THE JAPANESE TEA GARDEN

Every year, the arrival of spring signals the much-anticipated cherry blossom season at the Japanese Tea Garden. In shades of white and pink, these delightful blossoms draw many visitors hoping to see them while they last.

Known as Sakura in Japan, cherry blossoms hold deep cultural significance, and the time of year when they bloom is marked by festivals and celebrations. Most of the cherry trees at the Japanese Tea Garden are *Prunus x yedoensis*, more commonly known as Yoshino cherries. These beautiful trees are the first to

bloom and create a snowy effect with their multitude of single pink-tinged white flowers. Yoshino cherries were first introduced to western cultivation in the early 1900s, and have become beloved harbingers of spring. They're followed by the Kwanzan cherries, which continue the blooming season with their rich pink doubled flowers. Cherry blossoms are not exclusive to the Japanese Tea Garden — several can also be seen at the Botanical Garden. We hope you'll come see them in the gardens this spring.



NEW PLANT NURSERY FOR THE GARDENS

The new 40,000 square-foot complex replaces a 50-year-old facility and features outdoor growing space, a climate-controlled greenhouse, sanitary areas for plant propagation, and safety fencing with secured entrances for staff, volunteers, and service vehicles.

Worldwide, botanical gardens play a key role in protecting the world's plant biodiversity in the face of the extinction crisis, and a functional nursery is crucial in these efforts. As habitats are destroyed, botanical gardens are working to conserve and protect species that may otherwise be lost forever by cultivating, documenting, and sharing rare and iconic species.

The San Francisco Recreation and Park Department has a request for bids live now for the growing grounds and perimeter landscaping. We are excited to welcome

supporters of the new facility to a grand opening tour later this year, and to launch the Gardens into a new era for the collections and for conservation. Thanks to generous donors, the Nursery fundraising campaign met its original \$7 million goal. We are grateful for the generosity of longtime nursery volunteer and immediate past board chair Delle Maxwell and her husband Patrick Hanrahan, whose lead gift of \$1 million and \$2 million challenge match inspired over 237 generous donations.

Since breaking ground in 2021, the project has faced increased fundraising needs in light of rising costs and a prolonged permitting and approvals process that required additional design and project management services. Last fall, the Maxwell/Hanrahan Foundation inspired the community to close the remaining gap, with a \$250,000 match that was gratefully met. Thanks to generous donors, we will soon relaunch the plant propagation program, play a more active role in plant conservation, enhance our signature plant collections and develop new ones, and provide the public with unique plants to purchase and bring home.





Flower Piano

In the final days of summer and for the eighth time since 2015, Flower Piano transformed San Francisco Botanical Garden into the city's own *al fresco* concert hall where everyone was invited to play and listen.

The Gardens of Golden Gate Park is deeply grateful to our generous lead sponsors including Maxwell/Hanrahan Foundation, John and Marcia Goldman Foundation, Outside Lands Works, and the 5 Ryan Foundation, and for all the sponsors and donors who make Flower Piano possible. Flower Piano would not be possible without generous support from the community.

With Flower Piano 2023, San Francisco Botanical Garden received record-breaking visitation—up 12% year over year with close to 66,000 visitors—attracted new and renewing members, and gained fantastic media exposure. Thank you to our partners at Sunset Piano and all the musicians, performers, and community partners for sharing their art as well as all the wonderful volunteers for making this unique, beloved event possible.

New this year, Flower Piano Lounge offered joyful, intimate experiences in the recently renovated Celebration Garden featuring private concerts with access to





full-service bars offering alcoholic and non-alcoholic beverages as well as food makers from Off the Grid, comfortable lounge furniture, and expedited entry with in-and-out privileges between the Lounge and rest of the Garden for Flower Piano.

The Lounge hosted this year's opening event with a sold-out program, featuring Pablo Estigarribia, Latin Grammy winner, tango pianist, arranger, and composer, and the Sumi Lee Quartet.

Additional Lounge performers included jazz flamenco virtuoso pianist Alex Conde, Australian-Vietnamese pianist and composer Van-Anh Nguyen, as well as local bands Lavay Smith and the Red Hot Skillet Lickers, and The Orange Sunshine.

Thanks to generous support the Gardens can connect people to both nature and artistic expression, which are powerful sources for inspiring the community to

celebrate music, connectedness, and the unique beauty found in San Francisco's urban oasis.

We hope you will join us again for Flower Piano 2024! Please save the dates for a newly extended run of the event from September 13-22, 2024 with an opening night event on September 12.



Sponsors

MAXWELL/HANRAHAN FOUNDATION
JOHN & MARCIA GOLDMAN FOUNDATION
5 RYAN FOUNDATION
OUTSIDE LANDS WORKS
OFFICE
KPMG
O'MELVENY
JENNIFER TAYLOR
JENNIFER ROSDAIL REAL ESTATE TEAM
PACIFIC NURSERIES
SUE ANN LEVIN SCHIFF
RUTH & KEN WILCOX
CASANOVA EVENT RESOURCE
IRA & LEONORE GERSHWIN
PHILANTHROPIC FUND
GOLDEN GATE CHIROPRACTIC
PACIFIC CATCH
SEILER LLP
ALTI TIEDEMANN GLOBAL
DR. JOSEPH BARBACCIA
SAN FRANCISCO GARDEN CLUB
ZANE GRESHAM & CAROLE ROBINSON
DUCHESS CT / CHERYL TRAVERSE

FUN CHEAP SF
SAN FRANCISCO MAGAZINE
KQED
SAN FRANCISCO CHRONICLE





Volunteers



Volunteers are instrumental
in the success of the
Gardens of Golden Gate Park.



Volunteers helped care for the collections and supported events across all three Gardens, ushering at KQED Live's Japanese Tea Garden Walking Tour with Bay Curious, engaging visitors during our Corpse Flower Bloom at the Conservatory of Flowers, and helping families at Bean Sprouts in the Botanical Garden. Volunteers at the Gardens have been instrumental in supporting our mission, and we are so thankful for this passionate community of volunteers.

BUILDING CONNECTIONS WITH SERVICE GROUPS

This year we hosted 21 volunteer service events from organizations such as UCSF, Deloitte, Airbnb, Google, Cambridge Associates, BetterHelp, Salesforce, and Baker Tilly.

In addition to the time spent at the Botanical Garden, we received nearly \$10,000 in support for hosting these events. We look forward to new partnerships in the upcoming year.

LEARNING EXPERIENCES AT THE GARDENS

This year we were excited to further our commitment to engaging our future leaders by developing partnerships to host paid interns and fellows at the Gardens.

Yale Environmental Fellow Xochyl Perez joined the Programs & Partnerships team as part of a program supported by the Maxwell/Hanrahan Foundation. During Xochyl's time at the Gardens, she mentored our interns and youth, along with developing and implementing

programming such as a Violence Prevention and Green Spaces activity at Outside Lands.

In addition, we have been delighted to host nine College Corps Fellows from San Francisco State University this year! College Corps is a statewide initiative allowing students to learn from community organizations working in key priority areas such as climate action and conservation. Students earn academic credit and receive up to \$10,000 in exchange for 450 hours of service during an academic year.

NEW BEGINNINGS

This year we hosted our inaugural Gardens of Golden Gate Park Garden Guides and Interpretive Volunteer trainings. These groups join our valued community of interpretive volunteers who lead tours, interpretation stations, walks for school groups, and rove the Gardens. We look forward to training new cohorts of volunteers in the upcoming year, with our next training sessions scheduled for spring 2024 for Garden Guides and Interpretive Volunteers.

FLOWER PIANO

We reached a new milestone this year with 154 individuals contributing 874 hours of their time during Flower Piano. Thank you to everyone who made Flower Piano such a success!

Interested in volunteering?

Visit ggpp.org/volunteer to learn more and to complete the online application. We have many ongoing opportunities with the horticulture team, and events such as Flower Piano, Wreath-making – and many more!





Plant People

FIRST EVER GALA FOR THE GARDENS

Thank you to everyone who helped make the first Gala for the Gardens a marvelous success! Together we raised \$535,000 for the Gardens of Golden Gate Park. Support from the event will help ensure the advancement of these three historic garden treasures and places of community, their extraordinary plant collections, lifelong learning programs, and access to these public gardens for all.

It was wonderful to gather in the beautiful Celebration Garden with special guest speaker Gary Kamiya who ignited generosity, learning, and a shared love for San Francisco and Golden Gate Park. Our honorees Delle Maxwell's and Annette Huddle's remarkable contributions to the Gardens and our community were a moving inspiration for all.

A special thank you goes out to our incredible Presenter Sponsors Delle Maxwell & Pat Hanrahan; Champion Sponsors Margot & Steve Kerr; and Conservator Sponsors Don Baldocchi & Julie Chase Baldocchi, Anki & Larry Gelb, Sarah & Stuart Ryan, and Ruth & Ken Wilcox. We thank all our generous sponsors, event co-chairs Don Baldocchi and Cristina Jones, and the event committee, all of whom have contributed considerably; thank you.

We are grateful to Gardens staff and the more than 36 volunteers who gave their valuable time to this event! We deeply appreciate everyone's contributions!



2023 ANNUAL REPORT

IN A LANDSCAPE BACK IN THE BOTANICAL GARDEN

The Gardens were thrilled to welcome back In A Landscape: Classical Music in the Wild, a nonprofit outdoor concert series to San Francisco Botanical Garden in May. Founded in 2016 by classical pianist Hunter Noack, In A Landscape transports a 9-foot Steinway grand piano on a flatbed

trailer to State and National Parks, urban greenspaces, working ranches, farms, and historical sites for classical music concerts that connect people with each landscape. We're excited to have In a Landscape returning to the Botanical Garden on May 22 for another beautiful event.

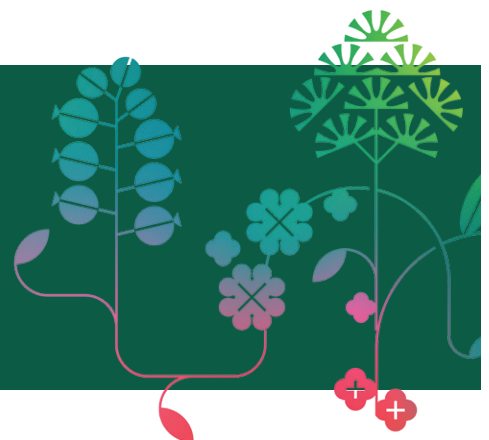


REMEMBERING LINDA MITTENESS

Linda will be missed by many. She volunteered in the Helen Crocker Russell Library of Horticulture for 15 years, beginning in 2006. She was always asking questions, eager to help with new projects, and willing to lend a hand. Linda didn't have a background as a librarian, but she would have been a wonderful one. She welcomed visitors with kindness, listened to their questions, and thoughtfully and expertly helped find answers. Linda was generous with her time and expertise, and she was also a generous donor to the Library. Linda and her wife Judith were Leadership and Legacy Circle members and loved the Garden and the Library deeply. Linda was also an avid gardener and bought many plants at Garden plant sales. Library staff are grateful for the time that Linda gave us and for her kindness and friendship over the years.



Thank you to everyone who helped make our first Gala for the Gardens a marvelous success! Together we raised \$535,000 for the Gardens of Golden Gate Park.





Financial Report

Statement of Financial Position

As of June 30, 2022 and June 30, 2023

ASSETS	2023	2022
Cash & Investments	\$ 21,399,642	\$ 17,747,284
Accounts and Pledges Receivable	832,694	5,605,688
Property & Equipment	6,678,903	4,793,558
Other	484,580	110,802
Total Assets	\$ 29,395,819	\$ 28,257,332
LIABILITIES AND NET ASSETS	2023	2022
Current Liabilities	\$ 2,145,142	\$ 1,826,437
Noncurrent Liabilities	126,096	-
Net Assets	27,124,581	26,430,895
Total Liabilities and Net Assets	\$ 29,395,819	\$ 28,952,083

Statement of Activities

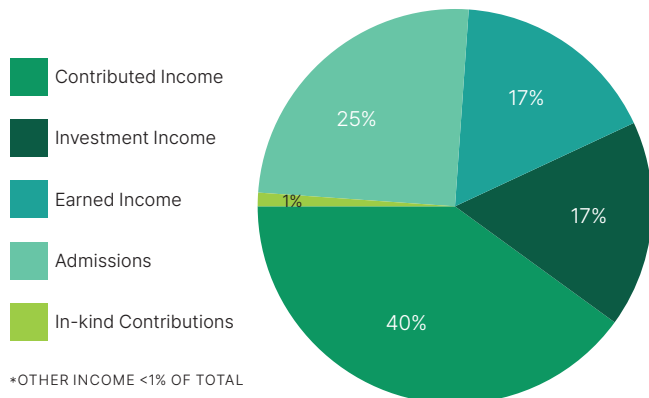
As of June 30, 2022 and June 30, 2023

SUPPORT AND REVENUE	2023	2022
Contributed Income	\$ 3,123,280	\$ 5,303,483
Investment Income	1,369,745	(2,539,470)
Earned Income	1,373,962	943,538
Admissions Income*	1,929,949	1,152,666
In-kind Contributions	73,163	-
Other Income	26,697	405,893
Total Support and Revenue	\$ 7,896,796	\$ 5,766,110
EXPENSES	2023	2022
Program Services	\$ 5,256,586	\$ 3,515,297
Fundraising & Development	658,604	519,579
Management & General	960,920	665,886
Total Expenses	\$ 6,876,110	\$ 4,700,762
Change in Net Assets	\$ 1,020,686	\$ 565,348

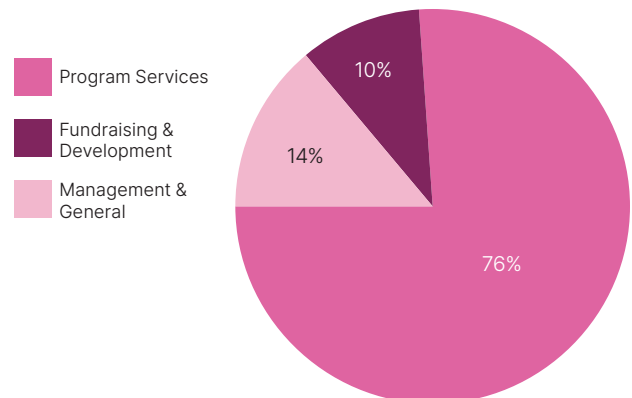
Sources & Uses of Funds

12 months ended June 30, 2023

SOURCES OF FUNDS



USES OF FUNDS





Donors

Thank you to our donors July 2022 - June 2023

\$100,000+

Institute of Museum & Library Services
Maxwell/Hanrahan Foundation
Estate of Joanne A. Taylor

\$50,000-\$99,999

The Keith Campbell Foundation for the Environment
Delle Maxwell & Patrick Hanrahan
Paul S. Nadler Family Charitable Trust

\$25,000-\$49,999

5 Ryan Foundation
Mary Austin & Brewster Kahle
Tish & James Brown
Golden State Warriors Community Foundation
Clarence E. Heller Charitable Foundation
The Kimball Foundation
Dr. Lawrence Pitts
Silicon Valley Bank
State of California Governor's Office
Sustainable Futures Fund
Ruth & Ken Wilcox

\$10,000-\$24,999

Don Baldocchi
Karen Birks
Frank A. Campini Foundation
Darcy Cohn & Spencer Seidman
Bonnie Eva Demergasso
Anki & Larry Gelb
Pat Gordon
James H. Greene, Jr.
Carlyn Halde Administrative Trust
Mary Eloise Halperin Estate
Jackson Family Wine
Heike Kaiser
Kaiser Permanente
KPMG
Stanley Langendorf Foundation
Eileen & Jude P. Laspa
Monica Martin
Helen & Thomas Merigan Charitable Trust
MSB Cockayne Fund
The Henry Mayo Newhall Foundation
Outside Lands Works

Will & Julie Parish Family
Jennifer & Alan Petersen
Regina Phelps & Dave Kieffer
Pisces Foundation
William & Joanne Prieur
Margaret & Vic Quattrin
San Francisco Education Fund
Sue Ann Levin Schiff
Stanley Smith Horticultural Trust
Sheila Stuart & Family
Michael Ullman
Roger Ullman & Renata Schiavo
Estate of Charles M Walters & Salvatore Piscitello
Dr. Joanne Whitney
Whittier Family Foundation
Oriana Minshall & Chloe Wilcox
Diane B. Wilsey
Richard & Patricia Yerian
Zellerbach Family Foundation
Susan Zetzer

\$5,000-\$9,999

Joseph & Clara Barbaccia
Janice & Matthew Barger
Douglas Berry
Benjamin Black
Bonnie Bridges & Bill Banyai
Bumble
Jane Chin & James Wong
Catherine T. Cochrane
The Helen & Jose Colton Foundation
Edward & Nancy Conner
Matthew Cook
Joan L. Cooke & Robert Lafore
Corvid Fund
Tony Farrell & Kathy Heinze
Lucy Fisher
Mira & Tim Foster
The Friend Family Foundation
Daniel Ge
Golden Gate Chiropractic Center
John & Marcia Goldman Foundation
Peter Good & Sara Bartholomew
Maggie Gosselin & Ben Sigelman
Paul & Elizabeth Ireland

Carol Izumi & Frank Wu
Cristina & Jason Jones
Ronald & Cheryl Karpowicz
Anne & Jeff Katz
Gretchen Kimball
Fred Levin
Charles Lowey-Ball & Gary Decad
Edward Maibach
Lisa Maibach & John Yamaguchi
Deborah Mann
Susi Marzuola & Peter Waller
Kathleen M McNulty
Joanna Miller
Dr. Nancy Milliken
Dr. Linda S. Mitteness & Dr. Judith C. Barker
Eva Monroe
Julie & Bradley Morgan
O'Melveny & Myers
The Bernard Osher Foundation
Pacific Catch
Su-Moon Paik & Bob Brown
Marianne H. Peterson
Shelagh Rohlen
Jennifer Rosdail Real Estate Team
John Rosekrans, Jr.
Sarah & J. Stuart Ryan
San Francisco Garden Club
The Serwin Family
Cora M. Shaw
Ian Shea
Tom & Jane Singer
The Mitchell David Solomon Foundation
Sandra Swanson
Michelle Tai
Blanche Thebom Trust
Wendy Tonkin
Cheryl Traverse/Duchess CT
V. Fei Tsen & Wayne Lew
Claire Veuthey
Tess Veuthey
Susy & Jack Wadsworth
Ann Weinstock
Naida Wharton
The Whitney Family
Magdalen Yum & King Fai Pang

GARDENS OF GOLDEN GATE PARK

\$2,500-\$4,999

Gwynn & Mitch August
 Raquel Baldocchi
 Heidi Baum
 Sandra Bessières
 Ben & Jocelyn Blumenrose
 Lisa Bransten & John Rumsey
 Marion Brenner
 Arden Bucklin-Sporer & Dr. Karl Sporer
 Sally A. Carlson
 David & Emily Casnocha
 Kenyon Corbett III
 Karen & David Crommie
 Pamela Rummage Culp
 Cypress Lawn Memorial Park
 Shannon Davis
 Bart & Ditty Deamer
 Frances E. Dependahl
 Destino Fund
 Kristan & Max Sartor Elman
 Ets-Hokin Studios
 Susan Fandel
 Mary Fishman
 Matt and Karena Fowler
 The Garden Route Company
 Jodi Gold
 Robert Goodman & John Bankston
 Zane Gresham & Carole Robinson
 Shepard & Melissa Harris
 Staci Hartman
 Heimbinder Family Fund
 Gayle M Ing
 Sid Kass
 Michael Kim & Jenny Yip
 John Kirkpatrick
 Olivia Kuo
 Tim & Suzanne Leonoudakis
 Marie & Barry Lipman
 Richard & Cynthia Snorf Livermore
 M Stark Gallery
 Michael McKenna & Baubie Fox
 Claire Myers & Liz Myers
 Wendy Myers-Svoboda
 Ernest Ng
 Cynthia L. Overbaugh
 Wendy Pelton & Maryann Rainey
 Daniel Poon
 Nicole & Victor Prieto
 Julie Ransom
 Janet Richardson
 Jas Rundel
 Erik Schutter
 Paul Scofield
 Tom Steyer & Kat Taylor
 Elaine & Rod Stutt
 Jennifer Taylor & Jacob Zigelman
 AITi | Tiedemann Global
 Vanguard Charitable Endowment Program
 Nicholas Woodworth
 Harold L. Wyman Foundation
 Yang Li Yee

\$1,000-\$2,499

A & K
 Sally Abrams
 Patricia & Henry Alker
 Dr. Frank & Mary Beth Almeda
 Another Planet Entertainment
 Janet Arnesty Household
 The Azus Foundation
 Bay Tree Design, Inc.
 Jackie Benson, Julie Benson, Steve Benson,
 Andy Benson, Jay Benson
 Stuart Berkowitz
 Barb Biancalana & George Gness
 Faith A. & Stephen Brown
 Jared Brubaker & Leslie Harlson
 Robert & Carolyn Bunje
 Susan Butler
 Alison Chaput
 Janis & John Chittick
 Jan Chong
 Michael Christman & Michael Fanning
 Marcia Chun
 Jillian & Donald R. Clark
 Courtney Clarkson & Roy Leggett
 Mimi Cohort
 Pete & Leslie Colasanti
 Deborah Coleman & Steve Prittie
 Patrick Collins
 Carolyn Colpitts
 John Copoulos
 Dr. Bill & Bridget Coughran
 Mary A. Crocker Trust
 Lauretta Cuadra
 Mr. William Dagley & Ms. Edith Dagley
 Timothy Dattels & Kristine Johnson
 Drew Denbo
 Carol Dependahl-Ripperda & Jerry Ripperda
 Tammi Driscoll & Jeremy Bowen
 Christopher & Karen Duderstadt
 Debbie Duncan
 Christopher Dydyk
 EMIKA Fund
 Richard & Shawn Fallon
 Nancy H. Fee
 Vickie Feldstein & Dennis Orwig
 Bonnie Fisher & Boris Dramov
 Kirsten Flynn
 Thomas & Martha Funkhouser
 Galanter & Jones
 Barry & Laura Galvin
 Joan & Launce E. Gamble
 Susan Gates
 Phil & Emily Ginsburg
 Meredith Goldsmith Philanthropic Fund
 Mary & Steven Gorski
 Rosemary Green
 Sophia Green & John Link
 Heidi Hansen & Richard Watkins
 Kimberly Harmon
 Dave Hermeyer & Samuel Wantman
 MaryLou & Fred Heslet
 Carol Hoffman
 Linda Hogle

Saxon Holt
 Lisa Howard
 Drs. Mary Hufty & Daniel Alegria
 Tina Humphrey
 Susan Hunter & Brian Morrisroe
 Alisa Ileeva
 Harriet Iwamoto & Colin Rudolph
 Anne Johnson & Peter Fish
 Hovey & Mary Ellen Kemp
 Eliza Kern
 Dana & Jim Ketcham
 Kate & Dr. Hyo Kim
 Joan Kugler & Paul McCauley
 Fine Arts Museums of San Francisco
 Stephanie Linder & Eamon O'Byrne
 Vanita & Austin Louie
 Sara Malone
 Kent McDonald & Betty Smith
 Nion McEvoy & Leslie Berriman
 Carla McKay & Martha Ehrenfeld
 Marie McNulty
 Bill & Stephanie Mellin
 Lisa Miao & Kairen Wong
 Sandy Monteko-Sherman & Remy Monteko
 Lainie Motamedi & Aaron Johnson
 Clare M. Murphy
 Tze Chang Ng & Huilan Wong
 Shannon Nichols
 Emilie & Doug Ogden
 Barbara Oleksiw
 Diane Parish & Paul Gelburd
 Jenni Parrish & Gerrid Clark
 Anne & Craig Paxton
 Dorothy Perkins
 Plant Zaddy Therapy
 Devon & Kelly Porpora
 Burr Preston
 PWP Landscape Architecture
 Richard & Claudine Radford
 Kathy & Corey Raffel
 Christopher & Julie Ridley
 Helen McKenna Ridley & Allan Ridley
 San Francisco Orchid Society
 San Francisco Succulent & Cactus Society
 Hiroko Sato, Sato Kimono Class
 Pat Scatena & David Hecht
 Karen Schaffer & Michael Ward
 Jane Scurich
 Michael & Alison Seaman
 John Spinale
 Stock Family
 Susy & Prescott Stone
 Stuart Toy
 Caroline Tsen
 Yang Wang
 Diane & William Wara
 David & Barbara Whitridge
 Kelly Williams
 Patricia Wipf
 Rex Wolf
 Rosemary & Sheldon Wong
 Jean & Hing Wong
 Shirley & Sidney Zetzer Family Foundation



Legacy Circle



Veronica Espada
Judianne Eynon
Mary C. Fishman
Dionne Fountain
Tom Gee
Beatrice & Ulf Gustafsson
Thomas Hann
Marsha Irwin & Richard Pesqueira
Mary Anne Kayiatos
Carrie Macdonald
Cynthia & John Major
Sara Malone
Maria Mangold & Stephen Hunter
Monica Martin
John McCallister
Eva Monroe
Edward D. Moran & Kevin Rillera
Elin Ouye & Dennis Sherman
Dr. Lawrence Pitts
Burr Preston
William & Joanne Prieur
Kathy & Corey Raffel
Douglas R. Shaffer & Walter Rask
Douglas Brent Rowden
Nancy Russell
Geoffrey W. Scammell
Naomi Shibata
Natalie O. Shuttleworth
John Stedman
Gary Weiss & Charles Stinson
Jeremy Taylor
Charles Vadalabene
Henry & Gloria Wachs Trust
Ruth & Ken Wilcox
Rosemary & Sheldon Wong

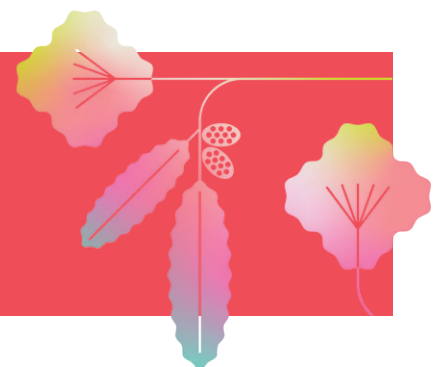
We are grateful to the many supporters who have advised us their estate plan includes a provision for the Gardens.

Dr. Frank & Mary Beth Almeda
Paul B. Althouse
Ruth Ann Armstrong
Drs. Diana Silver Arsham & Gary Arsham
Barbara F. Austin
Tess Barbieri
Edward & Sandra Bielski
Les Bowman & David Merrill
Peter Bradley & David Krimm
Dennis & Marlene Broce-Burke

Ellen & Howard C. Brown
Zachary & Patricia Coney
Joan Cooke & Robert Lafore
Larry A. Dahm
Bart & Ditty Deamer
Helen Desai
Maria E. Dichov
Irene Balcar Dillon & William Dillon
Sheila Stuart & Family
Dr. Philip & Marina Early

Interested in joining the Legacy Circle?

Give a gift for the Gardens' future. For information on the benefits of making an estate gift and to join the Legacy Circle, please visit: gggp.planmygift.org or call 415-661-1316 ext. 418





Tribute Listings

In honor of

Don Baldocchi
Tom Steyer & Kat Taylor

Lee & Jack Boerger
Marissa Thro

Donna Casey
Lyman Casey

Curtiss Chan
Jeannie Collins

Lori Chan
Jeannie Collins

Allen Patrick Chun
Marcia Chun

Dorthy Clifford
The Stanley S. Langendorf Foundation

Joan Cooke
Malcolm Gissen & Judith Cohen

Keila Crucet
Bruce Brill

Frances E. Dependahl
Carol Dependahl Ripperda & Jerry Ripperda
Janice Kerti

Rene Driscoll
Tammi Driscoll
Jeremy Bowen

Robyn Ford
Meghan & Stuart Thomas

Marina Gordon
Mary C. Fishman

Annette Huddle
Marlies Bruning
Joan Comer
Larry A. Dahm
Susan & Marvin Friedman
Heidi Hansen & Richard Watkins

Jocelyn Hunter
Avinash Kar
Lin-Wills Family Fund
Kim McCall
Elizabeth Murray
Christine Sculati
Suellen Sleamaker
Patrice Sutton & Robert Gould

Brendan Lange
Nancy Lange

Stephanie Linder
Cara Hirsch

Don Mahoney
Karen M. Birks & Steve O'Connor

Anna C. Bolla
Tish & James Brown

Bridget Patricia Clinton
Kathleen Conti

Larry A. Dahm
Mary C. Fishman
Dave Hermeyer & Samuel Wantman

Frederick & MaryLou Heslet
Patricia Hultgren

Anne & Jeff Katz
Irene Lee

Dottie Lovett
Monica Martin
Delle Maxwell & Patrick Hanrahan

Marie McNulty
Alison Moed Paolercio

Lisa & Clifford Roberts
Ann Wellington

David & Barbara Whitridge

Howard & Siesel Maibach
Edward Maibach
Lisa Maibach & John Yamaguchi

Sara Malone
Felice Horwitz

Delle Maxwell
Elisa Heikkilä & Milan Delor
Drs. Mary Hufty & Daniel Alegria

Susi Marzuola
William & Amelia Meffert
Richard Turner

Diane Nerheim
Joan McLellan Tayler

Ernest Ng
Hillsborough Garden Club

Sandra Norburg
Rosemary Jenckes

Julie Parish
Claire McMurtry

Anne & Craig Paxton
Margaret Gabriel

Sarah Ryan
Lilian & D.B. Murray

Bernard Veuthey
Cora Shaw

Claire Veuthey
Tess Veuthey

Robert H Weir
Lionel Conacher & Joan Dea

Ruth & Ken Wilcox
Ritt LaBrie & Jen Raxter
Fred Levin, The Shenson Foundation

Jean Yokley
Bradley Dean

Each gift enables us to offer unparalleled opportunities for inspiration and learning. We would like to extend our gratitude to those who generously contributed to the Gardens.



In memory of



Carol Baker
Lori Anderson

Don & Marilyn Baldocchi
Nancy Fee

Marilyn Baldocchi
Raquel Baldocchi

John Benson
Andy Benson
Jackie Benson
Jay Benson
Julie Benson
Steve Benson

Jan Bolles
Suzanne Dantonet

Beatrice Bowles
Kate Morrissey & Sarah Harrington

Richard Brambier
David Parr

Julie Brook
Sara Pinkert

Rae Lyn Burke
Joan Cooke & Robert Lafore

Kar W. Chan
Alice Loh

Ryan Baxter Cochrane
Catherine T. Cochrane

Karen Copeland
Pete & Leslie Colasanti

Russell Joseph Dryden
Wendy Myers-Svoboda

JoAnn Eastep
Krista H & Lisa Z

Lynne Margaret Eggers
Sally Abrams
Lauretta Cuadra
Marion Gillen
Carol Hoffman
Dorothy Perkins
Kimberley Rathbun

Tanya L Fimby
Tilly Roche Clark

Edward Florence
Zelda Goldman

Hermoine Eloise Freeman
Brian Freeman

Jay Fudenberg
David Zenoff & Janet Hunter

Bill Gaede
Robert & Carolyn Bunje

Renata Gasperi
Richard Lung

Mary Halligan
Laurel & Michael DiPrima

Mary Patricia Halligan
Gift Services Team, UC Berkeley

Mr. G.K. Jairath
Radhika Mehlotra

Jariel Jones
Ziperski Family

Kenneth K Kuo
Angela Kuo

Jean Lee
San Francisco Orchid Society

Cory Leonoudakis
Tim & Suzanne Leonoudakis

Nancy Livingston
Fred Levin

Hubble Lowey-Ball Decad
Charles Lowey-Ball & Gary Decad

Jane Merryman
Bridget Patricia Clinton

Linda Mitteness
Hogle Branch Fund

Jean Fong Ng
Bitva De La Rosa

Carolyn Nuite
Valerie Orlando

Jodi Piazza
Christine Carson

Mary Pitts
Caren Meghreblian & Harry Bernstein

Liz Hight Pocock
Jacqueline Linehan

Laura Rosen
David Rosen

Norman & Shirley Scofield
Paul Scofield

C Patrick Shaughnessy, Jr
Kelly Close

Carol Stevenson
Charlotte Burchard

Katherine Wallace Thompson
Kathy & Bob Courson

Alice Tordjman
Kinsley Binard

Rose-Marie Ullman
Michael Ullman
Roger Ullman

Betty Lou Hylton Wachob
Linda & Terry Post

Mark Wehman
Kenyon Corbett III

John K. Wilson Jr.
Rae Ann Emery & Marsha Seeley

Margaret Yuan
Dayna Salter





1199 9th Avenue
San Francisco, CA
94122

Nonprofit
Organization US
Postage PAID
Permit 11318
San Francisco, CA

